

Spider Fauna on Ulleungdo Island in Korea

Sue Yeon Lee¹, Jung Sun Yoo², Taeseo Park², Kwang Soo Kim³, Seung Tae Kim^{4,*}

¹College of Agricultural Life Science, Jeonbuk National University, Jeonju 54896, Korea

²Biological and Genetic Resources Utilization Division, National Institute of Biological Resources, Incheon 22689, Korea

³Animal Resources Division, National Institute of Biological Resources, Incheon 22689, Korea

⁴Life and Environment Research Institute, Konkuk University, Seoul 05029, Korea

ABSTRACT

The present study was conducted to establish a comprehensive checklist of spiders on Ulleungdo Island in Korea. Past records were compiled and four new surveys of spiders in Ulleungdo Island were conducted from May to September 2019. The surveys were conducted at 18 sites in seven of the nine major administrative districts. A total of 114 species from 84 genera in 26 families were identified from 958 individual spiders. The 21 spider species belonging to 10 families were added to the known spider fauna on Ulleungdo Island from the present study. The survey results were combined present results with previous records showed there were 242 species from 143 genera in 32 families on Ulleungdo Island. The species richness in each family was high, in the order Araneidae, Theridiidae, Salticidae, Linyphiidae, Tetragnathidae, Thomisidae, Gnaphodidae and Philodromidae. Four Korean endemic species, *Coscinida ulleungensis* Paik, 1995, *Steatoda ulleungensis* Paik, 1995, *Drassodes taehadongensis* Paik, 1995 and *Phrurolithus pennatoides* Seo, 2018, found only on Ulleungdo Island. In addition, the following six indigenous species that inhabit only in Ulleungdo Island: *Euryopis octomaculata* (Paik, 1995), *Porrhomma montanum* Jackson, 1913, *Piratula knorri* (Scopoli, 1763), *Cladothela parva* Kamura, 1991, *Cladothela unciinsignita* (Bösenberg and Strand, 1906) and *Clubiona tongdaoensis* Zhang, Yin, Bao and Kim, 1997. The zoogeographical distribution of spiders on Ulleungdo Island was classified into 9 cosmopolitan species (3.7%), 16 holarctic species (6.6%), 23 palearctic species (9.5%) and 6 Korean endemic species (2.4%). Fauna checklists are used to aid the assessment of biodiversity at various scales and are beneficial for the effective long-term management and use of national biological resources. The present study provides meaningful information for understanding national biodiversity.

Keywords: spider, fauna, checklist, Ulleungdo Island, Korea

INTRODUCTION

Spiders are a ubiquitous and important invertebrate predator group with high species richness and abundance; they occur in many natural and agricultural ecosystems (Howell and Pienkowski, 1971; Nyffeler and Benz, 1987). Spiders are the largest order of arachnids and rank seventh in the total species diversity among all groups of organisms (Sebastin and Peter, 2009). Globally, a total of 49,335 species of 4,211 genera in 129 families (World Spider Catalog, 2021). Of which, 866 spider species from 303 genera belonging to 43 families have been recorded from Korean Peninsula, including North Korea (National Institute of Biological Resources, 2019).

Ulleungdo Island lies about 130 km east of the Korean Penin-

sula. It was formerly known as Dagelet Island or Argonaut Island in Europe. The island is 9.5 km in length and 10 km in width, with an area of 72.56 km² (Wikipedia, 2020). The island is pentagon-shape and is made of volcanic rocks. The climate is oceanic, with a cool summer and a warm winter; the average temperature is 12°C, and amount of rainfall is 1,193 mm per year (Ulleung-gun, 2020). Ulleungdo Island is a repository of ecosystems because its topographical and geographical characteristics, and it has been predicted that its biodiversity will differ from inland areas of Korea.

Spider research on the Korean island was initiated by a Japanese entomologist, Doi (1935). He collected *Ariamnes cylindrogaster* (Theridiidae) and *Haemaphysalis flava* (*nomen dubium*) and included them in the animal list from Wando

© This is an Open Access article distributed under the terms of the Creative Commons Attribution Non-Commercial License (<http://creativecommons.org/licenses/by-nc/3.0/>) which permits unrestricted non-commercial use, distribution, and reproduction in any medium, provided the original work is properly cited.

***To whom correspondence should be addressed**

Tel: 82-2-2049-6163, Fax: 82-2-450-1094
E-mail: stkim2000@hanmail.net

Island. Paik (1937), the first Korean araneologist, collected *Oxyopes sertatus* (Oxyopidae) in Jeju-do and Geomundo Islands. The study of spiders on Ulleungdo Island began with Paik (1954). A total of 37 literatures have been published to date; 8 fauna records (Paik, 1954, 1995c; Kwon, 1977; Namkung and Seo, 1977; Namkung et al., 1981; Namkung, 1985; Paik and Kang, 1988; Kim et al., 2018), one checklist (Paik and Kim, 1956), and 27 taxonomic descriptions (Paik, 1957, 1965a, 1965b, 1966, 1969, 1971a, 1971b, 1971c, 1973, 1975, 1978a, 1978b, 1979a, 1979b, 1986a, 1986b, 1986c, 1987, 1988, 1991, 1995a, 1995b; Sohn and Paik, 1981; Paik and Sohn, 1984; Paik and Kang, 1987; Seo, 2008, 2017, 2018). The authors conducted four new and additional surveys of spiders on Ulleungdo Island from May to September 2019. This study was conducted to establish a comprehensive checklist of spiders on Ulleungdo Island, by compiling the present results with previous reports.

MATERIALS AND METHODS

Four surveys of spiders on Ulleungdo Island were conducted from May to September 2019 (21–23 May, 18–21 Jun, 31 July–2 Aug, and 1–3 Sep). The surveys were conducted at 18 sites in seven regions (Dodong-ri, Jeodong-ri, Na-ri, Namseo-ri, Namyang-ri, Sadong-ri and Taeha-ri) out of nine major administrative districts of Ulleungdo Island. Details shown in Table 1 and Fig. 1.

Spiders inhabiting plants and trees above ground were collected with various sized insect nets combined with an ocular collection. Epigeic spiders were collected using pitfall traps. Five pitfall traps were placed in each site, approximately 10 m apart. The pitfall traps used in this study were 500 ml transparent plastic containers 8 cm in diameter and 10 cm in height. A plastic filter with 6 holes 2 cm in diameter was installed in order to prevent the intrusion of small animals, such as rodents and reptiles, and a plastic cover was added at a depth of 5 cm from the top of each trap to prevent the decomposition of specimens from the influx of rain water. Ethyl-alcohol and ethylene-glycol were mixed at a 1 : 1 ratio to preserve specimens and decay. The traps were installed at each surveyed site in May and replaced in each survey.

The collected spiders were identified from taxonomical characters using a stereoscopic microscope (Nikon SMZ 800, Japan). The present results and previous reports were combined to analyze the characteristics of the spider fauna in Ulleungdo Island and to make a check list of spiders on Ulleungdo Island. The World Spider Catalog (2021) was used for species names and to take into consideration recent changes made to scientific names. The checklist provides the scientific names at the time of publication with previous authors, reported year, and distributions. In some cases, the distributions of certain species are not marked because previous researchers did not specify the actual collection locations of spiders but simply noted as Ulleungdo Island.



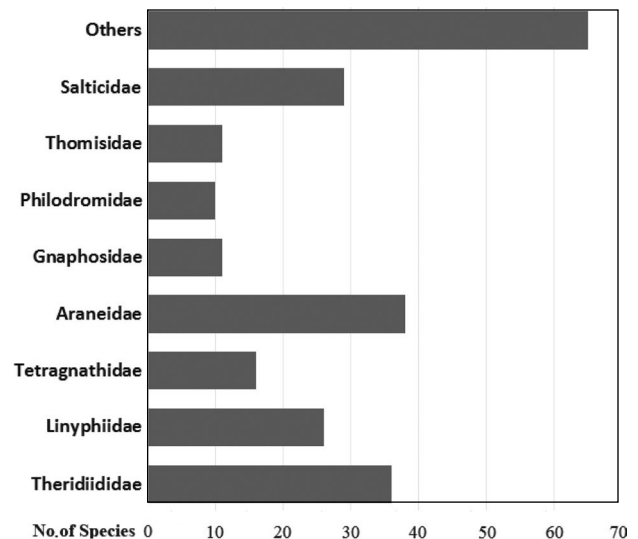
Fig. 1. Surveyed sites in Ulleungdo Island.

Table 1. Collection sites information

Administrative districts	Coordinates	Altitude (m)	Habitat type
1. Buk-myeon, Nari	37°31'17.7"N, 130°52'24.2"E	364	Basinal farmland
2. Buk-myeon, Nari	37°31'54.9"N, 130°52'33.5"E	398	Mixed forest
3. Buk-myeon, Nari	37°31'67.5"N, 130°52'41.6"E	256	Mixed forest
4. Ulleung-eup, Jeodong-ri	37°29'80.2"N, 130°53'54.6"E	214	Mixed forest
5. Ulleung-eup, Jeodong-ri, Naesujeon	37°30'64.2"N, 130°54'28.0"E	192	Mixed forest
6. Ulleung-eup, Jeodong-ri, Naesujeon	37°30'65.9"N, 130°54'04.3"E	205	Mixed forest
7. Ulleung-eup, Jeodong-ri, Naesujeon Mongdol Beach	37°30'46.7"N, 130°54'83.7"E	0	Coastal beach
8. Ulleung-eup, Jeodong-ri	37°29'74.8"N, 130°53'62.8"E	222	Mixed forest
9. Seo-myeon, Namseo-ri, Sucheung Tunnel	37°29'27.3"N, 130°48'18.0"E	58	Mixed forest
10. Seo-myeon, Taeha-ri	37°30'65.7"N, 130°48'26.5"E	27	Mixed forest
11. Seo-myeon, Taeha-ri	37°30'66.5"N, 130°48'34.5"E	50	Mixed forest
12. Seo-myeon, Taeha-ri, Seodalryeong Pass	37°30'21.1"N, 130°49'57.6"E	214	Mixed forest
13. Seo-myeon, Taeha-ri, Seodalryeong Pass	37°30'23.5"N, 130°49'42.2"E	184	Mixed forest
14. Seo-myeon, Namyang-ri	37°28'84.8"N, 130°51'16.8"E	176	Valley coppice
15. Seo-myeon, Namyang-ri, Tonggumi	37°27'85.4"N, 130°51'46.7"E	94	Farmland
16. Seo-myeon, Namyang-ri, Tonggumi	37°28'08.4"N, 130°51'28.2"E	119	Mixed forest
17. Ulleung-eup, Sadong-ri	37°28'63.1"N, 130°53'41.1"E	112	Mixed forest
18. Ulleung-eup, Sadong-ri, Anpyeongjeon	37°28'80.2"N, 130°53'19.3"E	306	Mixed forest
19. Ulleung-eup, Dodong-ri, Bongnaepokpo Falls	37°29'59.0"N, 130°53'05.0"E	316	Mixed forest

RESULTS

A total of 958 spiders were collected on Ulleungdo Island in the present study. From these, 114 species from 84 genera in 26 families were identified (Table 2, Appendix 1). In terms of the species richness of individual families, there were 24 theridiid species (21.4% of total) and 23 araneid species (20.5%), followed by 16 salticid species (14.3%), 6 tetragnathid species (5.4%), 6 thomisid species (5.4%), and 5 linyphiid species (4.5%). Twenty-one spider species belonging to 10 families were newly added to the spider fauna of Ulleungdo Island from the present study: *Gamasomorpha cataphracta* (Oonopidae); *Crustulina stricta*, *Paidiscura subpallens*, *Phoroncidia pilula*, *Theridion longipalpus* (Theridiidae); *Microdipoena jobi* (Mysmenidae); *Microneta viaria*, *Syedra oii*, *Walckenaeria ferruginea* (Linyphiidae); *Tetragnatha extensa*, *Tetragnatha yessoensis* (Tetragnathidae); *Araneus variegatus*, *Araniella yaginumai*, *Cyclosa kumadai*, *Neoscona pseudonautica*, *Yaginumia sia* (Araneidae); *Trachelas japonicus* (Trachelidae); *Philodromus aureoles* (Philodromidae); *Tmarus orientalis* (Thomisidae) and *Carrhotus xanthogramma*, *Phintella abnormis* (Salticidae). Combining these results with previous records, the spiders on Ulleungdo Island are composed of 242 species from 142 genera in 32 families (Table 2). In terms of species richness of individual families, the number of species comprising each family was high, in the order Araneidae, Theridiidae, Salticidae, Linyphiidae, Tetragnathidae, Thomisidae, Gnaphodidae, and Philodromidae (Fig. 2).

**Fig. 2.** Species richness of each family in Ulleungdo Island.

The zoogeographical distribution of spiders on Ulleungdo Island was classified into 9 cosmopolitan species (3.7%), 16 holarctic species (6.6%), 23 palearctic species (9.5%) and 7 Korean endemic species (3.9%) (Table 3).

Especially, we could collect diverse species from Jukdo Island, a small island adjacent to Ulleungdo Island. It lies 2 km east of Ulleungdo Island and is the largest island in the group apart from Ulleungdo. During the survey period, we visited Jukdo Island for a short time. Thirty-seven spiders were col-

Table 2. Synopsis of spider fauna of Ulleungdo Island in Korea

Synthesis with previous reports			Present study	
Families	Genus	Species	Genus	Species
Scytodidae	2	2	1	1
Pholcidae	1	2	1	2
Segestriidae	1	2	1	1
Oonopidae	1	1	1	1
Mimetidae	3	4	1	1
Oecobiidae	1	1	1	1
Uloboridae	1	3	1	2
Nesticidae	1	1	–	–
Theridiidae	27	36	20	23
Theridiosomatidae	1	1	–	–
Anapidae	1	1	–	–
Mysmenidae	1	1	1	1
Linyphiidae	18	26	5	5
Tetragnathidae	6	16	3	6
Araneidae	17	38	12	24
Lycosidae	5	9	3	3
Pisauridae	2	4	2	2
Ctenidae	1	1	1	1
Agelenidae	5	8	3	3
Dictynidae	4	5	1	1
Titanoecidae	1	1	–	–
Cheiracanthiidae	1	2	–	–
Miturgidae	1	1	1	1
Phrurolithidae	2	4	–	–
Clubionidae	1	7	1	3
Trachelidae	2	2	2	2
Trochanteriidae	1	1	1	1
Gnaphosidae	7	11	2	2
Sparassidae	1	1	1	1
Philodromidae	2	10	1	4
Thomisidae	5	11	5	6
Salticidae	20	29	13	16
Total	32 families		26 families	
	143 genera		85 genera	
	242 species		112 species	

lected from Jukdo Island and were recorded as reference data. Eleven species from 10 genera in 7 families were identified (Table 4).

DISCUSSION

The previous and present records, show that there are 242 spider species from 143 genera in 32 families on Ulleungdo Island (Table 2). According to the results of this survey and previous literature, only four Korean endemic species inhabit Ulleungdo Island: *Coscinida ulleungensis* Paik, 1995, *Steatoda*

Table 3. Spiders in Jukdo Island

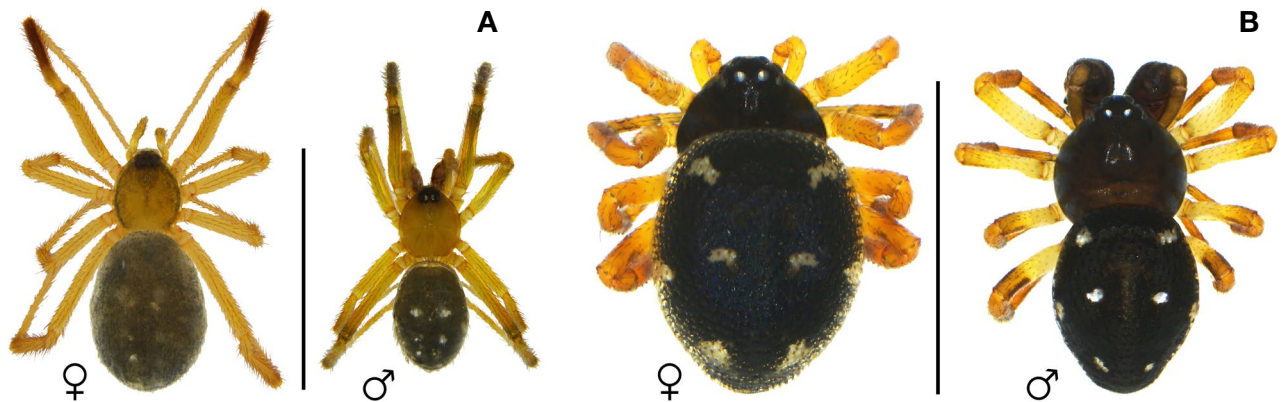
Families	Species	No. of Individuals
Theridiidae	<i>Parasteatoda kompirensis</i>	1♀
	<i>Parasteatoda tepidariorum</i>	8♀♀ 1♂
Araneidae	<i>Araneus ventricosus</i>	2♀♀
	<i>Argiope bruennichi</i>	9♀♀
	<i>Cyclosa japonica</i>	4♀♀ 1♂
Lycosidae	<i>Pardosa astrigera</i>	2♀♀
Agelenidae	<i>Allagelena difficilis</i>	1♂
Clubionidae	<i>Clubiona jucunda</i>	1♀
Thomisidae	<i>Ebrechtella tricuspadata</i>	2♀♀
	<i>Xysticus ephippiatus</i>	1♀ 2♂♂
Salticidae	<i>Evarcha albaria</i>	2♂♂

ulleungensis Paik, 1995 (Theridiidae); *Drassodes taehadongensis* Paik, 1995 (Gnaphosidae) and *Phrurolithus pennatoides* Seo, 2018 (Phrurolithidae). In addition, six Korean indigenous spider species inhabit Ulleungdo Island: *Euryopsis octomaculata* (Paik, 1995), *Porrhomma montanum* Jackson, 1913 (Linyphiidae); *Piratula knorri* (Scopoli, 1763) (Lycosidae); *Cladothela parva* Kamura, 1991, *Cladothela unciinsignita* (Bösenberg and Strand, 1906) (Gnaphosidae), and *Clubiona tongdaoensis* Zhang, Yin, Bao and Kim, 1997 (Clubionidae). Among these, *C. ulleungensis* and *E. octomaculata* were collected during the present investigation (Fig. 3). *E. octomaculata* was described as a new Korean species based on the female collected in Na-ri by Paik (1995a). The male was first described from Japan by Yoshida (1997). The male was collected in Korea for the first time during the present investigation. Kim et al. (2018) listed *Dolomedes nigrimaculatus* Song and Chen, 1991 that was collected from Ulleungdo Island. However, *D. nigrimaculatus* has not been described as taxonomic in Korea so far, and the identification itself is suspicious, so the species is not included in present list.

So far, 37 fauna studies have been conducted on spiders out of 491 Korean islands, excluding desert islands (Table 5). As shown in Table 5, most of the surveys were conducted over a short period of less than a week, and only one survey was done. This is not sufficient considering the seasonal occurrence of spiders. In the case of surveys of multiple islands, it was difficult to determine the exact spider fauna of each island because each list was not separately provided (Seo and Sohn, 1984; Kim and Kim, 2005; Park et al., 2007). Some islands were surveyed in winter, but there were cases in which the list showed a species that occurs only in summer; and the identification of some spiders questionable (Kim et al., 2011, 2012b). Most of the investigations were fragmented and cannot

Table 4. Zoogeographical distribution of spiders in Ulleungdo Island

Classification	Species
Cosmopolitan species	<i>Pholcus zichyi</i> (Pholcidae); <i>Parasteatoda tepidariorum</i> , <i>Steatoda grossa</i> , <i>Steatoda triangulosa</i> (Theridiidae); <i>Ostearius melanopygius</i> (Linyphiidae); <i>Neoscona nautica</i> (Araneidae); <i>Tegenaria domestica</i> (Agelenidae); <i>Urozelotes rusticus</i> (Ganphosidae); <i>Plexippus paykulli</i> (Salticidae)
Holarctic spider	<i>Scytodes thoracica</i> (Scytodidae); <i>Pholcus manueli</i> (Pholcidae); <i>Crustulina sticta</i> , <i>Parasteatoda tabulata</i> (Theridiidae); <i>Microneta viaria</i> , <i>Neriene clathrate</i> , <i>Neriene radiata</i> (Linyphiidae); <i>Tetragnatha extensa</i> (Tetragnathidae); <i>Araniella displicata</i> , <i>Larinioides cornutus</i> (Araneidae); <i>Pirata piraticus</i> , <i>Trochosa ruricola</i> (Lycosidae); <i>Dictyna arundinacea</i> (Dictynidae); <i>Philodromus cespitum</i> , <i>Philodromus rufus</i> (Philodromidae); <i>Myrmarachne formicaria</i> (Salticidae)
Palaearctic species	<i>Ero cambridgei</i> (Mimetidae); <i>Theridion pinastris</i> (Theridiidae); <i>Microdipoena jobi</i> (Mysmenidae); <i>Agyneta rurestris</i> , <i>Collinsia inerrans</i> , <i>Gnathonarium dentatum</i> , <i>Nematogmus sanguinolentus</i> , <i>Neriene emphana</i> , <i>Porrhomma montanum</i> (Linyphiidae); <i>Tetragnatha pinicola</i> (Tetragnathidae); <i>Argiope bruennichi</i> , <i>Hypsosinga sanguinea</i> , <i>Neoscona adianta</i> (Araneidae); <i>Agelena labyrinthica</i> (Agelenidae); <i>Piratula knorri</i> (Lycosidae); <i>Haplodrassus kulczynskii</i> (Ganphosidae); <i>Micrommata virescens</i> (Sparassidae); <i>Philodromus aureolus</i> (Philodromidae); <i>Ebrechtella tricuspudata</i> (Thomisidae); <i>Carrhotus xanthogramma</i> , <i>Heliophanus lineiventris</i> , <i>Marpissa pomatia</i> , <i>Sibianor aurocinctus</i> (Salticidae)
Korean endemic species	<i>Coscinida ulleungensis</i> , <i>Steatoda ulleungensis</i> (Theridiidae); <i>Oedothorax insulanus</i> (Linyphiidae); <i>Phrurolithus pennatoides</i> (Phrurolithidae); <i>Drassodes taehadongensis</i> (Ganphosidae); <i>Philodromus pseudoexilis</i> (Philodromidae)

**Fig. 3.** Endemic spiders of Ulleungdo Island. A, *Coscinida ulleungensis* Paik, 1995; B, *Euryopis octomaculata* Paik, 1995. Scale bars: A=3 mm, B=2 mm.

be considered to reflect the island's spider fauna accurately. However, the reason why systematic and regular surveys considering spider phenology on the island are not possible is that the island region is difficult to access because of poor transport networks and climate conditions. It is impossible to carry out a meaningful comparison among the studies, since their qualitative and quantitative results differ, as a result of differences in their research personnel, study period, research spectrum, and methods. Therefore, no general comparative analysis of island spider communities can be conducted. However, the spider fauna of Jeju and Ulleungdo Islands have been relatively fully analyzed because they have been investigated

many times over many years by different researchers. Namkung et al. (2002) reported a comprehensive checklist of spiders from Jeju Island (347 species from 166 genera in 36 families) and Paik and Kang (1988) presented the results from Ulleungdo Island (192 species from 98 genera in 26 families), integrating former fauna reports with taxonomic records. The number of species on Jeju Island is higher than Ulleungdo Island, perhaps because Jeju Island has a larger area than Ulleungdo Island and much richer environmental diversity. The Korean zoogeographical distribution of spiders, was found to be influenced by the northern species, including 36 holarctic and 72 palaearctic species (14.5% of the total spe-

Table 5. Faunistic records of spiders from Korean Islands

Administrative districts	Islands	Fauna	Survey period	Reference
Incheon Metropolitan City, Ongjin-gun	Deokjeokdo	20 families 65 genera 103 species	3-5 Jul 1976	Namkung et al. (1985)
	Gureopdo	6 families 10 genera 13 species	5 Aug 1983	
	Baekado	11 families 26 genera 33 species	4 Aug 1983	
	Uldo	9 families 20 genera 28 species	3 Aug 1983	
	Daebudo	13 families 39 genera 62 species	27 May, 13 Jun, 1973	
	Yeongjongdo	15 families 36 genera 49 species	4 Oct 1975	
Incheon Metropolitan City, Ongjin-gun	Baengnyeongdo	18 families 36 genera 54 species	20-24 Sept 1995	Kim (1996)
Incheon Metropolitan City, Ongjin-gun	Sindo	12 families 24 genera 39 species	Aug 2009	Kim et al. (2010)
	Sido	11 families 26 genera 35 species	(collection day not specified)	
	Modo	8 families 19 genera 26 species		
	Jangbongdo	11 families 25 genera 46 species		
Incheon Metropolitan City, Ganghwa-gun	Seokmodo, Gyodongdo	13 families 34 genera 56 species	29-31 Aug 2003	Kim and Kim (2005)
Incheon Metropolitan City, Jung-gu	Daemuuido	15 families 20 genera 24 species	25-27 Nov 2011	Kim et al. (2011)
Chungcheongnam-do, Boryeong-si	Wonsando	15 families 37 genera 55 species	27-29 Jun 2007 8-9 Aug 2008	Kim et al. (2008b)
Chungcheongnam-do, Dangjin-si	Daenanjido	11 families 17 genera 20 species	15-17 Feb 2012	Kim et al. (2012b)
Gyeongsangbuk-do, Ulleung-gun	Dokdo	2 families 3 genera 3 species	Not specified	Kim et al. (2007)
Gyeongsangbuk-do, Ulleung-gun	Dokdo	3 families 3 genera 3 species	20 Jun-25 Jul 1988 20 Jun-25 Jul 1980	Paik (1995c)
Gyeongsangnam-do, Geoje-si	Geojedo	18 families 57 genera 83 species	Jul 1964; Aug 1970	Paik (1970)
Gyeongsangnam-do, Geoje-si	Geojedo	20 families 56 genera 92 species	5 Aug 1997	Kim (1998)
Gyeongsangnam-do, Geoje-si	Geojedo	17 families 48 genera 70 species	30 Aug-3 Sep 2009	Yoo et al. (2010)
Gyeongsangnam-do, Namhae-gun	Namhaedo, Changseondo	25 families 74 genera 118 species	Aug 1980, Aug 1983	Seo and Sohn (1984)
Gyeongsangnam-do, Namhae-gun	Namhaedo	15 families 43 genera 81 species	21-25 August, 1997	Kim (2000)
Gyeongsangnam-do, Tongyeong-si	Yokjido	10 families 21 genera 29 species	26-28 August, 2008	Yoo et al. (2009)
Jeollabuk-do, Buan-gun	Wido	19 families 59 genera 64 species	4-7 October, 2001	Kim et al. (2004)
Jeollanam-do, Yeosu-si	Geomundo	21 families 51 genera 67 species	24-29 July, 1980	Jo (1981)
Jeollanam-do, Jindo-gun	Jindo	13 families 38 genera 68 species	8-11 Sep 1994	Kim (1995)
Jeollanam-do, Wando-gun	Gogeumdo	17 families 44 genera 82 species	9-12 Aug 1997	Kim (1997)

Table 5. Continued

Administrative districts	Islands	Fauna	Survey period	Reference
Jeollanam-do, Sinan-gun	Imjado	20 families 58 genera 87 species	1-3 Oct 2002	Kim et al. (2006)
Jeollanam-do, Sinan-gun	Daeheuksando Hongdo	17 families 45 genera 73 species 14 families 34 genera 54 species	12-15 Aug 1974 15-17 Aug 1974	Namkung (1978)
Jeollanam-do, Sinan-gun	Daeheuksando Soheuksando Hongdo	14 families 28 genera 39 species 16 families 35 genera 38 species 13 families 28 genera 35 species	25-31 Jul 1979	Paik (1980)
Jeollanam-do, Sinan-gun	Heuksando, Hongdo	20 families 43 genera 28 species	27-30 Aug 2007	Kim et al. (2008a)
Jeollanam-do, Sinan-gun	Bigeumdo, Dochoodo	19 families 34 genera 48 species	24-26 Sep 2006	Park et al. (2007)
Jeollanam-do, Wando-gun	Cheongsando	15 families 30 genera 36 species	28-30 Aug 2008	Do et al. (2009)
Jeollanam-do, Wando-gun	Yeoseodo	25 families 35 genera 40 species	16-20 Jan 2012	Kim et al. (2012a)
Jeju Special Self-Governing Province	Jejudo	36 families 166 genera 347 species	1936-2001	Namkung et al. (2002)

cies), with 160 Korean endemic species (21.5% of the total species) (Yoo et al., 2015). Like the Korean zoogeographical distribution of spiders, the spider faunas of both Jejudo and Ulleungdo Islands are influenced by northern species. However, the proportion of endemic species is low, and that of Ulleungdo Island is less than half that of Jejudo Island. There were 21 holarctic and 36 palearctic species (16.4% of the total species), with 27 Korean endemic species (7.7% of the total species) in Jejudo Island and 16 holarctic species (6.6% of the total species) 23 palearctic species (10.3% of the total species), with 6 Korean endemic species (2.4% of the total species) in Ulleungdo Island.

Recently, biotic monitoring and research to conserve Korean biological resources have been actively pursued. Understanding the biodiversity and distribution of species is an important part of many conservation programs. Fauna checklists are generally used to aid the assessment of biodiversity at various scales and to serve as raw data or distributional information for research fields, such as taxonomy, ecology, and physiology. Fauna checklists can be compiled from a variety of ecosystems at national or regional scales (Yoo et al., 2015). Taxonomic and biodiversity information is useful for effective long-term management and use of national biological resources and is important for monitoring and conservation actions based on distributional, temporal, and special changes. The fauna study of spiders on islands frequently generates interesting results owing to the characteristic environmental factors and geographic isolation of each island (Seo and Sohn, 1984). From this point of view, establishing a checklist in island areas, where long-term and regular investigations are difficult compared to mainland areas, as shown in the present study, will be a useful source of information for understanding national biodiversity.

ORCID

Sue Yeon Lee: <https://orcid.org/0000-0002-2066-3747>

Jung Sun Yoo: <https://orcid.org/0000-0002-3243-2006>

Taeseo Park: <https://orcid.org/0000-0003-2057-9411>

Kwang Soo Kim: <https://orcid.org/0000-0001-6132-8745>

Seung Tae Kim: <https://orcid.org/0000-0001-5820-9294>

CONFLICTS OF INTEREST

No potential conflict of interest relevant to this article was reported.

ACKNOWLEDGMENTS

This study was supported by a grant from the National Insti-

tute of Biological Resources (NIBR) of the Ministry of Environment (MOE) (NIBR 201902107), Republic of Korea.

REFERENCES

- Do HK, Kim MJ, Kang SM, Kim JP, 2009. The spider fauna of Cheongsan Island (Jeollanam-do, Wando-gun) from Korea. *Korean Arachnology*, 25:69-76.
- Doi H, 1935. On the insects and other animals in Wando. *Scientific Center Report*, 35:1-12.
- Howell JO, Pienkowski RL, 1971. Spider populations in alfalfa, with notes on spider prey and effect of harvest. *Journal of Economic Entomology*, 64:163-168. <https://doi.org/10.1093/jee/64.1.163>
- Jo TH, 1981. On the spiders from Geomun Island, Korea. *Korean Journal of Zoology*, 24:77-85.
- Kim JP, 1995. The spider fauna of Chindo Island, Korea. *Korean Arachnology*, 11:73-82.
- Kim JP, 1996. The spider fauna of Paiklyung-do Isl., Korea. *Korean Arachnology*, 12:119-127.
- Kim JP, 1997. The spider fauna of Kogum-do, Korea. *Korean Journal of Systematic Zoology*, 13:199-210.
- Kim JP, 1998. The spider fauna of Geojedo Island, Korea. *Korean Journal of Systematic Zoology*, 14:279-291.
- Kim JP, 2000. The spider fauna of Namhai Island, Korea. *Korean Journal of Soil Zoology*, 5:113-117.
- Kim JP, Choi HS, Ji SH, Kim DH, Byun JK, Lee HJ, Jo HJ, Han JH, Lee TH, Han JK, Jo YK, Jo WK, 2018. The spider fauna of Ulleung Island (Gyeongsangbuk-do, Ulleung-gun) in Korea. *Korean Arachnology*, 34:27-33.
- Kim JP, Jeong BM, Sim JI, Kim NY, Huh JW, Kim DH, Sung MK, 2012a. The spider fauna of Yeoseo-do (Jeollanam-do, Cheongdo-myeon) from Korea. *Korean Arachnology*, 28:9-15.
- Kim JP, Jeong JC, Lee YB, 2007. Spider fauna of Korean Island, Dokdo. *Korean Arachnology*, 23:35-40.
- Kim JP, Jung J, Yoo JS, Kim DH, Lee JW, 2006. Spider fauna of Imjado Island, Korea. *Korean Arachnology*, 22:7-29.
- Kim JP, Kim DH, 2005. Spider fauna of Seokmodo and Gyodongdo Islands (Incheon, Ganghwa) in Korea. *Korean Arachnology*, 21:253-260.
- Kim JP, Kim NY, Park JC, Kim DH, Park KT, 2011. The spider fauna of Dae moo eui-do (In cheon city, Joong-gu) from Korea. *Korean Arachnology*, 27:201-209.
- Kim JP, Kim NY, Seong MK, 2012b. The spider fauna of Dae nan Ji-do (Chungcheongnam-do, Dangjin-si, Seongmun-myeon) from Korea. *Korean Arachnology*, 28:47-52.
- Kim JP, Lim DH, Park YC, 2010. The spider fauna of Ongjin-gun (Sindo, Sido, Modo and Jangbongdo) in Korea. *Korean Arachnology*, 26:103-120.
- Kim JP, Shin JH, Park YC, 2008a. The spider fauna of Heuksan-do and Hong-do. *Korean Arachnology*, 24:55-76.
- Kim JP, Yoo JS, Lee DJ, Kim YJ, 2004. The spider fauna of Wi Do Island, Korea. *Korean Arachnology*, 20:39-52.
- Kim MJ, Park YC, Kim JP, 2008b. The spider fauna of Won-san Island (Chungnam, Boryeong-si) from Korea. *Korean Arachnology*, 24:149-164.
- Kwon BG, 1977. A synopsis of biota of the Dokdo and Ulleungdo. *Exploration report of Ulleungdo & Dokdo*, Kyungpook University, Daegu, pp. 91-101.
- Namkung J, 1978. The spider fauna of Is. Dae Heuksan-do and Is. Hong-do, Korea. *Korean Journal of Plant Protection*, 17:161-166.
- Namkung J, 1985. Addition to spider fauna of Isl. Ulreng-do (Dagelet), Korea. *Korean Arachnology*, 1:57-62.
- Namkung J, Im MS, Kim ST, Lee JH, 2002. Spider fauna of Jeju Island in Korea. *Journal of Asia-Pacific Entomology*, 5:55-74. [https://doi.org/10.1016/S1226-8615\(08\)60133-8](https://doi.org/10.1016/S1226-8615(08)60133-8)
- Namkung J, Paik NK, Im MS, 1985. The spider fauna of Deogjeog Archipelago, Daebudo Is. and Yeongjeongdo Is., Korea. *Korean Arachnology*, 1:29-41.
- Namkung J, Paik NK, Yoon KI, 1981. The spider fauna of Isl. Ulreng-do (Dagelet), Korea. *Korean Journal of Plant Protection*, 20:51-58.
- Namkung J, Seo PW, 1977. A study on the environmental distribution of spiders in Ulleungdo. *fellowship J. Seodaemun Middle School, Seoul*, pp. 40-48.
- National Institute of Biological Resources, 2019. National species list of Korea II, vertebrates, invertebrates, protozoans. *National Institute of Biological Resources, Incheon*, pp. 412-443.
- Nyffeler M, Benz G, 1987. Spiders in natural pest control: a review. *Journal of Applied Entomology*, 103:321-339. <https://doi.org/10.1111/j.1439-0418.1987.tb00992.x>
- Paik KY, 1937. On *Oxyopes sertatus* L. Koch found in Korea. *Acta Arachnologica*, 2:131-132. <https://doi.org/10.2476/asjaa.2.131>
- Paik KY, 1954. A list of spiders from Dagelet I., Korea. *Atypus*, 4:25-27.
- Paik KY, 1957. On fifteen unrecorded spiders from Korea. *Korean Journal of Biology*, 2:43-47.
- Paik KY, 1965a. Taxonomical studies of linyphiid spiders from Korea. *Educational Journal of the Teacher's College, Kyungpook University*, 3:58-76.
- Paik KY, 1965b. Korean Agelenidae of the genus *Agelena*. *Korean Journal of Zoology*, 8:55-66.
- Paik KY, 1966. Korean Amaurobiidae of genera *Amaurobius* and *Titanoeca*. *Thesis Collection, Kyungpook University*, 10:53-61.
- Paik KY, 1969. The Pisauridae of Korea. *Educational Journal of the Teacher's College, Kyungpook University*, 10:28-66.
- Paik KY, 1970. Spiders from Geojae-do Isl., Kyungnam, Korea. *Thesis Collection of Graduate School of Education, Kyungpook University*, 1:83-93.
- Paik KY, 1971a. Korean spiders of genus *Coras* (Araneae, Agelenidae). *Korean Journal of Zoology*, 14:7-18.
- Paik KY, 1971b. Korean spiders of genus *Tegenaria* (Araneae, Agelenidae). *Korean Journal of Zoology*, 14:19-26.
- Paik KY, 1971c. Supplemental description of *Coelotes songmin-*

- jae*. Educational Journal of the Teacher's College, Kyungpook National University, 13:171-175.
- Paik KY, 1973. Korean spiders of genus *Tmarus* (Araneae, Thomisidae). Thesis Collection of the Graduate School of Education, Kyungpook University, 4:79-89.
- Paik KY, 1975. Korean spiders of genus *Xysticus* (Araneae: Thomisidae). Educational Journal, Kyungpook University, 17: 173-186.
- Paik KY, 1978a. The Pholcidae (Araneae) of Korea. Educational Journal, Kyungpook University, 20:113-135.
- Paik KY, 1978b. Illustrated flora and fauna of Korea, Vol. 21. Araneae. Ministry of Education, Seoul, pp. 1-548.
- Paik KY, 1979a. Korean spiders of family Dictynidae. Research Review of Kyungpook National University, 27:419-431.
- Paik KY, 1979b. Korean spiders of the genus *Philodromus* (Araneae: Thomisidae). Research Review of Kyungpook National University, 28:421-452.
- Paik KY, 1980. The spider fauna of Dae Heuksan-do Isl., So Heuksan-do Isl. and Hong-do Isl., Jeunlanam-do, Korea. Kyungpook Education Forum Kyungpook National University, 22:153-173.
- Paik KY, 1986a. A new record spider of the genus *Achaearanea* (Araneae: Theridiidae) from Korea. Korean Arachnology, 2:3-6.
- Paik KY, 1986b. Studies on the Korean salticid (Araneae) II. A new record species, *Euophrys trivittata*, from Korea, with a description of the male. Korean Arachnology, 2:19-22.
- Paik KY, 1986c. Korean spiders of the genera *Zelotes*, *Trachyzelotes* and *Urozelotes* (Araneae: Gnaphosidae). Korean Arachnology, 2:23-46.
- Paik KY, 1987. Studies on the Korean salticid (Araneae) III. Some new record species from Korea or South Korea and supplementary describe for two species. Korean Arachnology, 3:3-21.
- Paik KY, 1988. Korean spiders of the genus *Alopecosa* (Araneae: Lycosidae). Korean Arachnology, 4:85-111.
- Paik KY, 1991. Four new species of the linyphiid spiders from Korea (Araneae: Linyphiidae). Korean Arachnology, 7:1-17.
- Paik KY, 1995a. Korean spiders of the genus *Steatoda* (Araneae: Theridiidae). I. Korean Arachnology, 11:1-14.
- Paik KY, 1995b. Two new species of the genus *Coscinida* Simon, 1894 (Araneae: Theridiidae) from Korea. Korean Arachnology, 11:15-22.
- Paik KY, 1995c. Spiders from the island Ulleung-do, Korea II. - with description of one new species and one unrecorded species from Korea. Korean Arachnology, 11:43-54.
- Paik KY, Kang JM, 1987. One new record species of the genus *Litisedes* (Araneae; Agelenidae) from Korea. Korean Arachnology, 3:91-96.
- Paik KY, Kang JM, 1988. Spider from the Island Ullungdo, Korea. Korean Arachnology, 4:47-70.
- Paik KY, Kim KJ, 1956. A list of spiders from Korea. Korean Journal of Biology, 1:59-84.
- Paik KY, Sohn SR, 1984. The Korean spiders of the genus *Haplo-drassus* Chamberlin, 1922 (Araneae: Gnaphosidae). Journal of Institute of Natural Science, Keimyung University, 3:105-112.
- Park YC, Kang SM, Jeong JC, Kim JP, 2007. Spider fauna of two Korean islands (Bigeum-do and Docho-do). Korean Arachnology, 23:41-56.
- Sebastin PA, Peter KV, 2009. Spiders of India. Universities Press, Hyderabad, pp. 1-614.
- Seo BK, 2008. Two species of the genus *Cladothela* from Korea (Araneae: Gnaphosidae). Journal of Institute of Natural Science, Keimyung University, 27:39-44.
- Seo BK, 2017. A new species and three new records of the families Gnaphosidae and Clubionidae (Araneae) from Korea. Korean Journal of Environmental Biology, 35:191-197. <https://doi.org/10.11626/KJEB.2017.35.2.191>
- Seo BK, 2018. New species and records of the spider families Pholcidae, Uloboridae, Linyphiidae, Theridiidae, Phrurolithidae, and Thomisidae (Araneae) from Korea. Journal of Species Research, 7:251-290. <https://doi.org/10.12651/JSR.2018.7.4.251>
- Seo BK, Sohn SR, 1984. The spider fauna and three valuable species of Namhae-gun, Gyeongsangnam-do, Korea. Journal of the Institute of Natural Science, Keimyung University, 3:113-120.
- Sohn SR, Paik KY, 1981. On the unreported species of *Pirata meridionalis* and genus *Pirata* (Lycosidae, Araneae) from Korea. Korean Journal of Zoology, 24:19-25.
- Ulleung-gun, 2020. Ulleungdo: local information [Internet]. Ulleung-gun, Accessed 8 Apr 2021, <http://www.ulleung.go.kr/english/page.htm?mnu_uid=2127&>.
- Wikipedia, 2020. Ulleungdo [Internet]. Accessed 8 Apr 2021, <<https://en.wikipedia.org/wiki/Ulleungdo>>.
- World Spider Catalog, 2021. World Spider Catalog. Version 22.0. Natural History Museum, Bern, Accessed 8 Apr 2021, <<http://wsc.nmbe.ch>>.
- Yoo HJ, Kang SM, Kim JP, Park YC, 2009. The spider fauna of Yokji Island (Gyeongsangnam-do, Tongyeong-si) from Korea. Korean Arachnology, 25:83-90.
- Yoo JS, Kim ST, Lee SY, Jung JK, Lee JH, 2010. Spider fauna of Island Geojedo (Prov. Gyeongsangnam-do) in Korea. Journal of Korean Nature, 3:31-37. [https://doi.org/10.1016/S1976-8648\(14\)60005-0](https://doi.org/10.1016/S1976-8648(14)60005-0)
- Yoo JS, Lee SY, Im MS, Kim ST, 2015. Bibliographic checklist of Korean spiders (Arachnida: Araneae) ver. 2015. Journal of Species Research, 4(Special Issue):1-112. [https://doi.org/10.12651/JSR.2015.4\(S\).001](https://doi.org/10.12651/JSR.2015.4(S).001)
- Yoshida H, 1997. A newly recorded species of the genus *Euryopis* (Araneae: Theridiidae) from Japan. Acta Arachnologica, 46: 111-113.

Received November 25, 2020
 Revised April 9, 2021
 Accepted April 9, 2021

Appendix 1. Checklist of spiders in Ulleungdo Island

‘O’ newly recorded spiders from present study and ‘#’ collected spiders from present study in the parenthesis, ‘j’ juvenile

Family SCYTODIDAE Blackwall, 1864

Dictis striatipes L. Koch, 1872

Scytodes nigrolineata: Paik, 1978b; Namkung et al., 1981.

Scytodes striatipes: Paik and Kang, 1988.

Distribution: Dodong-ri.

Scytodes thoracica (Latreille, 1802) (#)

Scytodes thoracica: Paik, 1978b; Namkung et al., 1981.

Distribution: Dodong-ri (Bongnaepokpo Falls), Jeodong-ri.

Specimens collected: 1♂ (Jeodong-ri, 18 Jun 2019).

Family PHOLCIDAE C. L. Koch, 1850

Pholcus manueli Gertsch, 1937 (#)

Pholcus opilionoides: Paik, 1978a, 1978b; Namkung et al., 1981; Paik and Kang, 1988.

Pholcus manueli: Kim et al., 2018.

Distribution: Cheonbu-ri, Dodong-ri, Hyeonpo-ri, Jeodong-ri (Naesujeon, Naesujeon Mongdol Beach, Wadalri), Na-ri, Sadong-ri.

Specimens collected: 2♀♀ 1♂ (Naesujeon Mongdol Beach, Jeodong-ri, 21 Jun 2019).

Pholcus zichyi Kulczyński, 1901 (#)

Pholcus phalangioides: Paik, 1954; Paik and Kim, 1956; Paik, 1978a; Namkung et al., 1981; Paik and Kang, 1988.

Distribution: Jeodong-ri, Hyeonpo-ri, Sadong-ri (Obatgol), Taeha-ri.

Specimens collected: 9♀♀ 6♂♂ (Jeodong-ri, 31 Jul 2019), 5♀♀ 4♂♂ (Jeodong-ri, 3 Sep 2019), 4♀♀ 2♂♂ (Sadong-ri, 1 Aug 2019), 4♀♀ 6♂♂ (Taeha-ri, 3 Sep 2019).

Family SEGESTRIIDAE Simon, 1893

Ariadna insulicola Yaginuma, 1967

Ariadna insulicola: Namkung, 1985; Paik and Kang, 1988; Kim et al., 2018.

Distribution: Jeodong-ri, Seonginbong Peak.

Ariadna lateralis Karsch, 1881 (#)

Ariadna lateralis: Paik, 1978b; Namkung et al., 1981; Paik and Kang, 1988; Kim et al., 2018.

Distribution: Dodong-ri (Bongnaepokpo Falls), Jeodong-ri, Jeodong-ri (Wadalri).

Specimens collected: 1♀ 2♂♂ (Jeodong-ri, 1 Aug 2019).

Family OONOPIDAE Simon, 1890

Gamasomorpha cataphracta Karsch, 1881 (O, #)

Distribution: Taeha-ri (Taeha-ri, Seodalryeong Pass).

Specimens collected: 2♀♀ 1♂ (Seodalryeong Pass, Taeha-ri, 3 Sep 2019).

Family MIMETIDAE Simon, 1881

Eremetus koreanus (Paik, 1967)

Ero koreana: Namkung, Paik and Yoon, 1981; Paik and Kang, 1988; Kim et al., 2018.

Ero cambridgei Kulczynski, 1911

Ero cambridgei: Kim et al., 2018.

Ero japonica Bösenberg and Strand, 1906

Ero japonica: Kim et al., 2018.

Mimetus testaceus Yaginuma, 1960 (#)

Mimetus testaceus: Namkung et al., 1981; Paik and Kang, 1988.

Distribution: Taeha-ri (Seodalryeong Pass).

Specimens collected: 2♀♀ (Seodalryeong Pass, Taeha-ri, 1 Aug 2019).

Family OECOBIIDAE Blackwall, 1862***Uroctea compactilis* L. Koch, 1878 (#)**

Uroctea compactilis: Paik, 1954, 1978b; Paik and Kim, 1956; Namkung et al., 1981; Paik and Kang, 1988; Kim et al., 2018.

Distribution: Dodong-ri (Dodong-ri, Bongnaepokpo Falls), Jeodong-ri (Jeodong-ri, Wadalri), Namyang-ri, Sadong-ri.

Specimens collected: 2 ♀♀ (Jeodong-ri, 21 May 2019), 1 ♀ 1 ♂ (Sadong-ri, 1 Aug 2019).

Family ULOBORIDAE Thorell, 1869***Octonoba sinensis* (Simon, 1880) (#)**

Uloborus tokyoensis: Kwon, 1977; Paik, 1978b; Namkung et al., 1981.

Uloborus sinensis: Paik and Kang, 1988.

Distribution: Dodong-ri, Na-ri, Namyang-ri.

Specimens collected: 1 ♀ 1 ♂ (Na-ri, 31 Jul 2019).

***Octonoba sybotides* (Bösenberg and Strand, 1906) (#)**

Uloborus sybotides: Namkung, 1985; Paik and Kang, 1988.

Distribution: Jeodong-ri (Yongbawigol), Sadong-ri, Taeha-ri.

Specimens collected: 1 ♀ (Sadong-ri, 20 Jun 2019), 1 ♀ (Taeha-ri, 1 Aug 2019).

***Octonoba varians* (Bösenberg and Strand, 1906)**

Uloborus defectus: Paik, 1954; Paik and Kim, 1956.

Uloborus varians: Paik, 1978b; Namkung et al., 1981; Paik and Kang, 1988.

Family NESTICIDAE Simon, 1894***Nesticella quelpartensis* (Paik and Namkung, 1969)**

Nesticus quelpartensis: Namkung et al., 1981; Paik and Kang, 1988.

Family THERIDIIDAE Sundevall, 1833***Anelosimus crassipes* (Bösenberg and Strand, 1906) (#)**

Anelosimus crassipes: Namkung et al., 1981; Paik and Kang, 1988; Kim et al., 2018.

Distribution: Dodong-ri (Bongnaepokpo Falls), Jeodong-ri (Wadalri), Namyang-ri (Namyang-ri, Tonggumi), Sadong-ri, Taeha-ri.

Specimens collected: 1 ♀ (Bongnaepokpo Falls, Dodong-ri, 2 Aug 2019), 2 ♀♀ (Namyang-ri, 1 Aug 2019), 1 ♀ (Sadong-ri, 20 Jun 2019), 3 ♀♀ (Taeha-ri, 1 Aug 2019).

***Argyrodes bonadea* (Karsch, 1881) (#)**

Argyrodes bonadea: Paik and Kang, 1988.

Distribution: Jeodong-ri (Jeodong-ri, Saguneom).

Specimens collected: 2 ♀♀ (Jeodong-ri, 31 Jul 2019).

***Ariamnes cylindrogaster* Simon, 1889 (#)**

Ariamnes cylindrogaster: Namkung et al., 1981.

Argyrodes cylindrogaster: Paik and Kang, 1988.

Distribution: Dodong-ri (Bongnaepokpo Falls), Namyang-ri.

Specimens collected: 1 ♀ (Bongnaepokpo Falls, Dodong-ri, 2 Aug 2019), 2 ♀♀ (Namyang-ri, 1 Aug 2019).

***Campanicola ferrumequina* (Bösenberg and Strand, 1906)**

Theridion ferrumequinum: Namkung et al., 1981.

Achaearanea ferrumequinum: Paik and Kang, 1988.

***Chikunia albipes* (Saito, 1935)**

Theridion rapulum: Namkung et al., 1981; Paik and Kang, 1988.

***Chryso foliata* (L. Koch, 1878) (#)**

Chryso punctifera: Namkung, 1985; Paik and Kang, 1988.

Distribution: Dodong-ri (Bongnaepokpo Falls), Jeodong-ri (Jeodong-ri, Naesujeon).

Specimens collected: 1 ♀ 1 ♂ (Jeodong-ri, 1 Aug 2019).

***Coleosoma octomaculatum* (Bösenberg and Strand, 1906) (#)**

Theridion octomaculatum: Namkung, 1985.

Coleosoma octomaculatum: Paik and Kang, 1988.

Distribution: Dodong-ri (Dodong-ri, Bongnaepokpo Falls), Jeodong-ri (Jeodong-ri, Wadalri), Seonginbong Peak.

Specimens collected: 3♀♀ 1♂♂ (Jeodong-ri, 1 Aug 2019).

***Coscinida ulleungensis* Paik, 1995 (#)**

Coscinida ulleungensis Paik, 1995b.

Distribution: Dodong-ri (Dodong-ri, Bongnaepokpo Falls), Jeodong-ri (Jeodong-ri, Naesujeon), Na-ri, Taeha-ri (Taeha-ri, Seodal-ryeong Pass).

Specimens collected: 1♀♀ 6♂♂♂ (Jeodong-ri, 1 Aug 2019), 2♂♂♂ (Naesujeon, Jeodong-ri, 1 Sep 2019), 1♂♂ (Na-ri, 18 Jun 2019), 1♂♂ (Na-ri, 31 Jul 2019), 1♀ (Seodalryeong Pass, Taeha-ri, 3 Sep 2019), 1♀ (Taeha-ri, 3 Sep 2019).

***Crustulina sticta* (O. P.-Cambridge, 1861) (O, #)**

Distribution: Sadong-ri.

Specimens collected: 1♀ (Sadong-ri, 20 Jun 2019).

***Dipoena punctisparsa* Yaginuma, 1967**

Dipoena punctisparsa: Namkung et al., 1981; Paik and Kang, 1988; Kim et al., 2018.

***Enoplognatha abrupta* (Karsch, 1879)**

Enoplognatha transversifoveata: Paik and Kang, 1988.

Distribution: Na-ri.

***Episinus affinis* Bösenberg and Strand, 1906**

Episinus affinis: Namkung et al., 1981; Paik and Kang, 1988.

***Episinus nubilus* Yaginuma, 1960 (#)**

Episinus nubilus: Paik and Kang, 1988.

Distribution: Dodong-ri (Bongnaepokpo Falls), Jeodong-ri.

Specimens collected: 1♀♂ 1♂♂ (Jeodong-ri, 18 Jun 2019).

***Euryopsis octomaculata* (Paik, 1995) (#)**

Steatoda octomaculata Paik, 1995a.

Distribution: Na-ri, Taeha-ri.

Specimens collected: 1♀ 1♂♂ (Taeha-ri, 21 May 2019).

***Neospintharus fur* (Bösenberg and Strand, 1906)**

Argyrodes fur: Namkung, Paik and Yoon, 1981; Paik and Kang, 1988.

Neospintharus fur: Kim et al., 2018.

***Nihonhimea japonica* (Bösenberg and Strand, 1906) (#)**

Theridion japonicum: Namkung et al., 1981.

Achaearanea japonica: Paik and Kang 1988.

Parasteatoda japonica: Kim et al., 2018.

Distribution: Dodong-ri, Jeodong-ri (Wadalri), Na-ri, Namyang-ri (Tonggumi), Sadong-ri, Taeha-ri.

Specimens collected: 5♀♀ (Sadong-ri, 1 Aug 2019), 4♀♀ 1♂♂♂ (Taeha-ri, 3 Sep 2019).

***Paidiscura subpallens* (Bösenberg and Strand, 1906) (O, #)**

Distribution: Dodong-ri (Bongnaepokpo Falls).

Specimens collected: 2♀♀ 2♂♂♂ (Bongnaepokpo Falls, Dodong-ri, 18 Jun 2019).

***Parasteatoda angulithorax* (Bösenberg and Strand, 1906) (#)**

Achaearanea angulithorax: Namkung et al., 1981; Paik and Kang, 1988.

Parasteatoda angulithorax: Kim et al., 2018.

Distribution: Cheonbu-ri, Dodong-ri (Dodong-ri, Bongnaepokpo Falls), Hyeonpo-ri, Jeodong-ri, Na-ri, Namyang-ri (Tonggumi), Sadong-ri, Seonginbong Peak.

Specimens collected: 2♀♀ 1♂♂ (Jeodong-ri, 1 Aug 2019).

***Parasteatoda culicivora* (Bösenberg and Strand, 1906)**

Achaearanea lunata: Namkung et al., 1981.

Achaearanea culicivora: Paik and Kang, 1988.

Distribution: Jeodong-ri (Naesujeon).

***Parasteatoda kompirensis* (Bösenberg and Strand, 1906) (#)**

Theridion kompirensis: Namkung et al., 1981.

Achaearanea kompiresis: Paik and Kang, 1988.

Distribution: Dodong-ri (Bongnaepokpo Falls), Jeodong-ri, Na-ri, Namyang-ri, Sadong-ri, Seonginbong Peak.

Specimens collected: 2♀♀ (Bongnaepokpo Falls, Dodong-ri, 2 Aug 2019), 4♀♀ 1♂♂ (Jeodong-ri, 18 Jun 2019), 1♀ (Namyang-ri,

1 Aug 2019).

***Parasteatoda tabulata* (Levi, 1980) (#)**

Acaharanea nipponica: Paik, 1986a.

Achaearanea tabulata: Paik and Kang, 1988.

Distribution: Dodong-ri (Bongnaepokpo Falls), Jeodong-ri, Na-ri, Namyang-ri, Taeha-ri.

Specimens collected: 1 ♀ 1 ♂ (Bongnaepokpo Falls, Dodong-ri, 2 Aug 2019), 1 ♂ (Jeodong-ri, 18 Jun 2019), 5 ♀♀ 1 ♂ (Na-ri, 18 Jun 2019), 1 ♀ 1 ♂ (Namyang-ri, 20 Jun 2019), 2 ♀♀ (Namyang-ri, 1 Aug 2019), 2 ♀♀ 3 ♂♂ (Taeha-ri, 21 May 2019).

***Parasteatoda tepidariorum* (C. L. Koch, 1841) (#)**

Theridion tepidariorum: Paik, 1954; Paik and Kim, 1956; Kwon, 1977.

Achaearanea tepidariorum: Namkung et al., 1981; Paik and Kang, 1988.

Distribution: Cheonbu-ri (Jukam), Dodong-ri (Bongnaepokpo Falls, Saguneom), Gwanmobong Peak, Jeodong-ri (Jeodong-ri, Naesujeon, Naesujeon Mongdol Beach, Yongbawigol), Na-ri (Albong Peak), Namyang-ri (Namyang-ri, Tonggumi), Sadong-ri, Seonginbong Peak, Taeha-ri (Taeha-ri, Seodalryeong Pass).

Specimens collected: 7 ♀♀ 1 ♂ (Bongnaepokpo Falls, Dodong-ri, 2 Aug 2019), 1 ♀ (Naesujeon, Jeodong-ri, 21 May 2019), 8 ♀♀ 5 ♂♂ (Jeodong-ri, 18 Jun 2019), 3 ♀♀ (Naesujeon Mongdol Beach, Jeodong-ri, 18 Jun 2019), 6 ♀♀ (Jeodong-ri, 31 Jul 2019), 5 ♀♀ (Jeodong-ri, 3 Sep 2019), 1 ♀ (Namyang-ri, 20 Jun 2019), 7 ♀♀ (Namyang-ri, 1 Aug 2019), 2 ♀♀ (Tonggumi, Namyang-ri, 23 May 2019), 1 ♀ (Na-ri, 22 May 2019), 1 ♀ (Taeha-ri, 21 May 2019), 1 ♀ 1 ♂ (Seodalryeong Pass, Taeha-ri, 1 Aug 2019), 1 ♀ 1 ♂ (Taeha-ri, 1 Aug 2019), 3 ♀♀ (Seodalryeong Pass, Taeha-ri, 3 Sep 2019), 6 ♀♀ (Taeha-ri, 3 Sep 2019).

***Phoroncidia pilula* (Karsch, 1879) (O, #)**

Distribution: Taeha-ri.

Specimens collected: 1 ♀ 2 ♂♂ (Taeha-ri, 20 Jun 2019).

***Platnickina sterninotata* (Bösenberg and Strand, 1906) (#)**

Theridion sterninotatum: Namkung, 1985; Paik and Kang, 1988.

Platnickina sterninotata: Kim et al., 2018.

Distribution: Jeodong-ri (Yongbawigol), Taeha-ri.

Specimens collected: 1 ♂ (Taeha-ri, 1 Aug 2019).

***Rhomphaea saganana* (Dönitz and Strand, 1906)**

Argyrodes saganus: Namkung et al., 1981; Paik and Kang, 1988.

Distribution: Gwanmobong Peak.

***Steatoda grossa* (C. L. Koch, 1838) (#)**

Steatoda grossa: Namkung et al., 1981; Paik and Kang, 1988.

Distribution: Namyang-ri.

Specimens collected: 1 ♀ (Namyang-ri, 1 Aug 2019).

***Steatoda triangulosa* (Walckenaer, 1802)**

Steatoda triangulosa: Namkung et al., 1981; Paik and Kang, 1988.

Distribution: Namyang-ri (Tonggumi), Sadong-ri.

***Steatoda ulleungensis* Paik, 1995**

Steatoda ulleungensis Paik, 1995a.

Distribution: Taeha-ri.

***Stemmops nipponicus* Yaginuma, 1969 (#)**

Stemmops nipponicus: Namkung, 1985; Paik and Kang, 1988; Kim et al., 2018.

Distribution: Dodong-ri (Bongnaepokpo Falls), Jeodong-ri.

Specimens collected: 2 ♀♀ 2 ♂♂ (Jeodong-ri, 3 Sep 2019).

***Takayus chikunii* (Yaginuma, 1960)**

Theridion chikunii: Namkung et al., 1981; Paik and Kang, 1988.

***Takayus takayensis* (Saito, 1939) (#)**

Theridion takayense: Namkung et al., 1981; Paik and Kang, 1988.

Distribution: Namyang-ri (Tonggumi).

Specimens collected: 2 ♀♀ (Tonggumi, Namyang-ri, 23 May 2019).

***Theridion longipalpus* Zhu, 1998 (O, #)**

Distribution: Dodong-ri, Jeodong-ri (Naesujeon).

Specimens collected: 1 ♂ (Dodong-ri, 18 Jun 2019), 1 ♂ (Naesujeon, Jeodong-ri, 18 Jun 2019).

***Theridion pinastri* L. Koch, 1872**

Theridion pinastri: Namkung et al., 1981; Paik and Kang, 1988.

***Thymoites ulleungensis* (Paik, 1991) (#)**

Savignia ulleungensis Paik, 1991.

Distribution: Dodong-ri (Salgunam, Bongnaepokpo Falls), Jeodong-ri.

Specimens collected: 2♂♂ (Jeodong-ri, 18 Jun 2019).

***Yaginumena castrata* (Bösenberg and Strand, 1906) (#)**

Dipoena castrata: Namkung, 1985, Paik and Kang, 1988.

Yaginumena castrata: Kim et al., 2018.

Distribution: Dodong-ri (Bongnaepokpo Falls), Jeodong-ri (Naesujeon), Na-ri.

Specimens collected: 1♀ (Bongnaepokpo Falls, Dodong-ri, 2 Aug 2019), 1♂ (Jeodong-ri, 18 Jun 2019).

***Yunohamella subadulta* (Bösenberg and Strand, 1906)**

Theridion subadultum: Namkung et al., 1981; Paik and Kang, 1988.

Yunohamella subadulta: Kim et al., 2018

Distribution: Cheonbu-ri, Gwanmobong Peak.

Family THERIDIOSOMATIDAE Simon, 1881

***Theridiosoma epeiroides* Bösenberg and Strand, 1906**

Theridiosoma epeiroides: Namkung et al., 1981; Paik and Kang, 1988.

Family ANAPIDAE Simon, 1895

***Conculus lyugadinus* Komatsu, 1940**

Conculus simboggulensis (lapsus): Namkung et al., 1981; Paik and Kang, 1988.

Family MYSMENIDAE Petrunkevitch, 1928

***Microdipoena jobi* (Kraus, 1967) (O, #)**

Distribution: Taeha-ri.

Specimens collected: 1♀ (Taeha-ri, 20 Jun 2019).

Family LINYPHIIDAE Blackwall, 1859

***Agyneta rurestris* (C. L. Koch, 1836)**

Meioneta rurestris: Namkung et al., 1981; Paik and Kang, 1988.

***Collinsia inerrans* (O. P.-Cambridge, 1885)**

Collinsia japonica: Paik, 1995c.

Distribution: Dodong-ri (Bongnaepokpo Falls).

***Doenitzius peniculus* Oi, 1960**

Doenitzius peniculus: Namkung et al., 1981; Paik and Kang, 1988.

Distribution: Jeodong-ri (Yongbawigol).

***Doenitzius pruvus* Oi, 1960**

Doenitzius pruvus: Namkung et al., 1981; Paik and Kang, 1988.

Distribution: Jeodong-ri (Yongbawigol), Na-ri, Seonginbong Peak (Bukse Valley).

***Erigone prominens* Bösenberg and Strand, 1906**

Erigone prominens: Namkung et al., 1981; Paik and Kang, 1988.

***Floronia exornata* (L. Koch, 1878)**

Floronia bucculenta: Kwon, 1977; Paik, 1978b; Namkung et al., 1981; Paik and Kang, 1988.

Distribution: Gwanmobong Peak, Seonginbong Peak (Bukse Valley).

***Gnathonarium dentatum* (Wider, 1834)**

Gnathonarium dentatum: Namkung et al., 1981.

Gnathonarium exsiccatum: Paik and Kang, 1988.

***Gonatium arimaense* Oi, 1960**

Gonatium arimaense: Paik and Kang, 1988.

Distribution: Jeodong-ri.

***Gonatium japonicum* Simon, 1906**

Gonatium opium: Kwon, 1977.

Gonatium japonicum: Namkung, 1985; Paik and Kang, 1988.

Distribution: Taeha-ri.

***Herbiphantes cericeus* (Saito, 1934)**

Lepthyphantes cericeus: Namkung, 1985; Paik and Kang, 1988.

Distribution: Jeodong-ri (Naesujeon).

***Ketambea nigripectoris* (Oi, 1960) (#)**

Neolinyphia nigripectoris: Paik, 1965a.

Neriere nigripectoris: Paik, 1978b; Namkung et al., 1981; Paik and Kang, 1988; Kim et al., 2018.

Distribution: Cheonbu-ri (Baegun-dong), Dodong-ri (Bongnaepokpo Falls, Saguneom), Jeodong-ri, Na-ri, Sadong-ri (Anpyeong-jeon), Taeha-ri (Taeha-ri, Seodalryeong Pass).

Specimens collected: 1♀ (Jeodong-ri, 18 Apr 2019), 1♂ (Na-ri, 22 May 2019), 2♀♀ 1♂ (Sadong-ri, 1 Aug 2019), 2♀♀ 2♂♂ (Anpyeongjeon, Sadong-ri, 2 Sep 2019), 1♀ (Taeha-ri, 20 Jun 2019), 1♂ (Taeha-ri, 1 Aug 2019), 1♂ (Seodalryeong Pass, Taeha-ri, 1 Aug 2019).

***Microneta viaria* (Blackwall, 1841) (O, #)**

Distribution: Na-ri.

Specimens collected: 2♀♀ (Na-ri, 18 Jun 2019).

***Nematogmus sanguinolentus* (Walckenaer, 1842)**

Nematogmus sanguinolentus: Namkung et al., 1981; Paik and Kang, 1988.

***Neriere clathrata* (Sundevall, 1830)**

Neriere clathrata: Namkung, 1985; Paik and Kang, 1988.

Distribution: Sadong-ri.

***Neriere emphana* (Walckenaer, 1842)**

Linyphia emphana: Paik, 1957, 1965.

Neriere emphana: Paik, 1978b; Namkung et al., 1981; Paik and Kang, 1988.

Distribution: Gwanmobong Peak, Na-ri (Albong Peak), Seonginbong Peak (Bukseo Valley).

***Neriere japonica* (Oi, 1960)**

Neriere japonica: Namkung et al., 1981; Paik and Kang, 1988.

***Neriere kimyongkii* (Paik, 1965)**

Neriere kimyongkii: Paik and Kang, 1988.

Distribution: Gwanmobong Peak.

***Neriere limbatinella* (Bösenberg and Strand, 1906)**

Neriere limbatinella: Namkung et al., 1981; Paik and Kang, 1988.

***Neriere oidedicata* van Helsdingen, 1969 (#)**

Neriere oidedicata: Namkung et al., 1981; Paik and Kang, 1988; Kim et al., 2018.

Distribution: Cheonbu-ri (Baegun-dong), Dodong-ri (Bongnaepokpo Falls, Saguneom), Gwanmobong Peak, Jeodong-ri (Naesujeon, Wadalri), Na-ri (Albong Paek), Namyang-ri (Guam), Taeha-ri (Taeha-ri, Taeharyeong Pass).

Specimens collected: 1♀ 1♂ (Taeha-ri, 21 May 2019).

***Neriere radiata* (Walckenaer, 1842)**

Neriere radiata: Kim et al., 2018.

***Nippononeta obliqua* (Oi, 1960)**

Meioneta oblique: Namkung, 1985; Paik and Kang, 1988.

Distribution: Dodong-ri.

***Oedothorax insulanus* Paik, 1980**

Oedothorax insulanus: Namkung et al., 1981; Paik and Kang, 1988.

***Ostearius melanopygius* (O. P.-Cambridge, 1879)**

Ostearius melanopygius: Paik and Kang, 1988.

Distribution: Cheonbu-ri (Jukam).

***Porrhomma montanum* Jackson, 1913**

Porrhomma montanum: Namkung et al., 1981; Paik and Kang, 1988.

***Syedra oii* Saito, 1983 (O, #)**

Distribution: Jeodong-ri (Naesujeon), Namseo-ri, Taeha-ri (Taeha-ri, Seodalryeong Pass).

Specimens collected: 4♀ 10♂ (Naesujeon, Jeodong-ri, 1 Sep 2019), 3♀ (Namseo-ri, 1 Aug 2019), 1♂ (Taeha-ri, 20 Jun 2019), 1♀ 10♂ (Taeha-ri, 3 Sep 2019), 2♀ 8♂ (Seodalryeong Pass, Taeha-ri, 3 Sep 2019).

***Walckenaeria ferruginea* Seo, 1991 (O, #)**

Distribution: Dodong-ri (Bongnaepokpo Falls), Na-ri.

Specimens collected: 3♀ 2♂ (Bongnaepokpo Falls, Dodong-ri, 18 Jun 2019), 1♀ (Na-ri, 18 Jun 2019).

Family TETRAGNATHIDAE Menge, 1866

***Leucauge blanda* (L. Koch, 1878)**

Leucauge blanda: Namkung et al., 1981; Paik and Kang, 1988.

Distribution: Jeodong-ri (Naesujeon).

***Leucauge celebesiana* (Walckenaer, 1842) (#)**

Leucauge subblanda: Namkung et al., 1981; Paik and Kang, 1988.

Distribution: Cheonbu-ri (Hongmundong), Dodong-ri (Dodong-ri, Bongnaepokpo Falls), Jeodong-ri (Jeodon-ri, Naesujeon), Na-ri, Namyang-ri (Tonggumi), Sadong-ri (Sadong-ri, Anpyeongjeon), Taeha-ri (Taeha-ri, Taeharyeong Pass).

Specimens collected: 3♀ 1♂ (Jeodong-ri, 18 Jun 2019), 2♀ (Naesujeon, Jeodong-ri, 18 Jun 2019), 4♀ 1♂ (Na-ri, 18 Jun 2019), 1♀ (Namyang-ri, 20 Jun 2019), 1♀ (Sadong-ri, 1 Aug 2019), 1♀ (Taeha-ri, 21 May 2019), 1♀ (Taeha-ri, 1 Aug 2019).

***Leucauge subgemmea* Bösenberg and Strand, 1906**

Leucauge subgemmea: Namkung et al., 1981; Paik and Kang, 1988.

***Metellina ornata* (Chikuni, 1955) (#)**

Menosira ornata: Namkung et al., 1981; Paik and Kang, 1988; Kim et al., 2018.

Distribution: Na-ri.

Specimens collected: 3♀ (Na-ri, 31 Jul 2019).

***Metleucauge chikunii* Tanikawa, 1992**

Meta kompirensis: Paik, 1954; Paik and Kim, 1956; Namkung et al., 1981.

Metleucauge kompirensis: Paik and Kang, 1988.

***Metleucauge yunohamensis* (Bösenberg and Strand, 1906) (#)**

Meta yunohamensis: Kwon, 1977; Namkung et al., 1981.

Metleucauge yunohamensis: Paik and Kang, 1988.

Distribution: Cheonbu-ri (Baegun-dong, Chusan-dong, Jukam), Dodong-ri (Bongnaepokpo Falls, Saguneom), Jeodong-ri (Jusagok, Naesujeon, Sutgol, Wadalri), Namyang-ri, Seonginbong Peak.

Specimens collected: 1♀ (Namyang-ri, 1 Aug 2019).

***Pachygnatha tenera* Karsch, 1879**

Dyschiriognatha tenera: Paik and Kang, 1988.

Pachygnatha tenera: Kim et al., 2018.

Distribution: Jeodong-ri (Wadalri).

***Tetragnatha extensa* (Linnaeus, 1758) (O, #)**

Distribution: Namyang-ri, Taeha-ri.

Specimens collected: 1♀ (Namyang-ri, 1 Aug 2019), 3♀ 1♂ (Taeha-ri, 20 Apr 2019).

***Tetragnatha lauta* Yaginuma, 1959**

Tetragnatha lauta: Namkung et al., 1981; Paik and Kang, 1988.

***Tetragnatha maxillosa* Thorell, 1895 (#)**

Tetragnatha japonica: Namkung et al., 1981.

Tetragnatha maxillosa: Paik and Kang, 1988.

Distribution: Dodong-ri (Saguneom), Jeodong-ri (Jusagok), Na-ri, Namyang-ri, Taeha-ri.

Specimens collected: 3♀ (Taeha-ri, 1 Aug 2019).

***Tetragnatha pinicola* L. Koch, 1870**

Tetragnatha pinicola: Namkung et al., 1981; Paik and Kang, 1988.

***Tetragnatha praedonia* L. Koch, 1878 (#)**

Tetragnatha praedonia: Paik, 1954; Paik and Kim, 1956; Namkung et al., 1981; Paik and Kang, 1988.

Distribution: Namyang-ri (Tonggumi), Taeha-ri.

Specimens collected: 4♀ 5♂ (Taeha-ri, 2 Sep 2019).

***Tetragnatha squamata* Karsch, 1879**

Tetragnatha squamata: Namkung et al., 1981; Paik and Kang, 1988; Kim et al., 2018.

Distribution: Dodong-ri.

***Tetragnatha vermiformis* Emerton, 1884**

Tetragnatha shikokiana: Namkung et al., 1981.

Tetragnatha vermiformis: Paik and Kang, 1988; Kim et al., 2018.

Distribution: Jeodong-ri (Naesujeon), Seonginbong Peak.

***Tetragnatha yesoensis* Saito, 1934 (O, #)**

Distribution: Jeodong-ri, Taeha-ri.

Specimens collected: 1 ♀ 1 ♂ (Jeodong-ri, 18 Jun 2019), 1 ♀ (Taeha-ri, 1 Aug 2019).

***Zhinu reticuloides* Yaginuma, 1958**

Meta reticuloides: Namkung et al., 1981; Paik and Kang, 1988.

Distribution: Jeodong-ri (Yongbawigol).

Family ARANEIDAE Clerck, 1757***Acusilas coccineus* Simon, 1895 (#)**

Acusilas coccineus: Namkung et al., 1981; Paik and Kang, 1988.

Distribution: Dodong-ri (Bongnaepokpo Falls).

Specimens collected: 1 ♀ (Bongnaepokpo Falls, Dodong-ri, 18 Jun 2019).

***Alenatea fuscocolorata* (Bösenberg and Strand, 1906)**

Neoscona fuscocolorata: Namkung et al., 1985; Paik and Kang, 1988.

Distribution: Jeodong-ri (Naesujeon).

***Araneus mitificus* (Simon, 1886) (#)**

Araneus mitificus: Namkung et al., 1981; Paik and Kang, 1988; Kim et al., 2018.

Distribution: Taeha-ri, Taeha-ri (Seodalryeong Pass).

Specimens collected: 1 ♀ (Taeha-ri, 21 May 2019), 1 ♀ (Taeha-ri, 3 Sep 2019), 2 ♀ ♀ (Seodalryeong Pass, Taeha-ri, 3 Sep 2019).

***Araneus pentagrammicus* (Karsch, 1879) (#)**

Araneus pentagrammicus: Namkung et al., 1981; Paik and Kang, 1988.

Distribution: Dodong-ri (Bongnaepokpo Falls), Jeodong-ri (Naesujeon).

Specimens collected: 1 ♀ (Bongnaepokpo Falls, Dodong-ri, 2 Aug 2019).

***Araneus triguttatus* (Fabricius, 1775)**

Araneus triguttatus: Namkung et al., 1981; Paik and Kang, 1988.

***Araneus tsurusakii* Tanikawa, 2001**

Araneus viperifer: Namkung et al., 1981; Paik and Kang, 1988.

Distribution: Dodong-ri, Sadong-ri.

***Araneus variegatus* Yaginuma, 1960 (O, #)**

Distribution: Dodong-ri (Bongnaepokpo Falls).

Specimens collected: 1 ♀ (Bongnaepokpo Falls, Dodong-ri, 2 Aug 2019).

***Araneus ventricosus* (L. Koch, 1878) (#)**

Araneus ventricosus: Paik, 1954; Paik and Kim, 1956; Namkung et al., 1981; Paik and Kang, 1988; Kim et al., 2018.

Distribution: Cheonbu-ri (Jukam), Dodong-ri (Bongnaepokpo Falls, Saguneom), Jeodong-ri (Jeodong-ri, Naesujeon), Namyang-ri, Sadong-ri, Seonginbong (Bukseo Valley), Taeha-ri (Taeha-ri, Seodalryeong Pass).

Specimens collected: 2 ♂ ♂ (Jeodong-ri, 18 Jun 2019), 2 ♀ ♀ j (Naesujeon, Jeodong-ri, 22 May 2019), 1 ♀ (Namyang-ri, 1 Aug 2019), 1 ♀ j (Taeha-ri, 21 May 2019), 1 ♀ j (Taeha-ri, 20 Jun 2019), 1 ♀ j (Seodalryeong Pass, Taeha-ri, 1 Aug 2019), 4 ♀ ♀ (Seodalryeong Pass, Taeha-ri, 2 Sep 2019).

***Araniella displicata* (Hentz, 1847)**

Araniella cucurbitina: Kwon, 1977.

Araniella displicata: Namkung et al., 1981.

Araniella sp.: Paik and Kang, 1988.

Distribution: Dodong-ri (Dodong-ri, Bongnaepokpo Falls, Jusagok).

***Araniella yaginumai* Tanikawa, 1995 (O, #)**

Distribution: Dodong-ri (Bongnaepokpo Falls).

Specimens collected: 1 ♀ (Bongnaepokpo Falls, Dodong-ri, 18 Jun 2019).

***Argiope amoena* L. Koch, 1878**

Argiope amoena: Namkung et al., 1981; Paik and Kang, 1988.

***Argiope bruennichi* (Scopoli, 1772) (#)**

Argiope bruennichi: Paik, 1954; Paik and Kim, 1956.

Argiope bruennichi: Namkung et al., 1981; Paik and Kang, 1988.

Argiope bruennichi: Kim et al., 2018.

Distribution: Dodong-ri (Dodong-ri, Bongnaepokpo Falls), Namyang-ri (Namyang-ri, Guam, Tonggumi), Sadong-ri (Anpyeongjeon), Seonginbong Peak (Bukseo Valley), Taeha-ri.

Specimens collected: 4 ♀♀ 1 ♂ (Bongnaepokpo Falls, Dodong-ri, 2 Aug 2019), 1 ♀ (Namyang-ri, 1 Aug 2019), 17 ♀♀ 1 ♂ (Anpyeongjeon, Sadong-ri, 2 Sep 2019), 2 ♂♂ (Taeha-ri, 1 Aug 2019), 7 ♀♀ (Taeha-ri, 3 Sep 2019).

***Argiope minuta* Karsch, 1879 (#)**

Argiope minuta: Kwon, 1977.

Distribution: Dodong-ri (Dodong-ri, Bongnaepokpo Falls), Namyang-ri.

Specimens collected: 1 ♀ (Bongnaepokpo Falls, Dodong-ri, 2 Aug 2019), 1 ♀ (Namyang-ri, 1 Aug 2019).

***Cyclosa argenteoalba* Bösenberg and Strand, 1906 (#)**

Cyclosa argenteoalba: Namkung et al., 1981; Paik and Kang, 1988.

Distribution: Cheonbu-ri (Hongmundong), Dodong-ri (Bongnaepokpo Falls), Jeodong-ri.

Specimens collected: 1 ♀ 1 ♂ (Jeodong-ri, 18 Jun 2019).

***Cyclosa atrata* Bösenberg and Strand, 1906**

Cyclosa atrata: Paik, 1954; Paik and Kim, 1956; Namkung et al., 1981; Paik and Kang, 1988.

***Cyclosa ginnaga* Yaginuma, 1959**

Cyclosa ginnaga: Namkung et al., 1981; Paik and Kang, 1988.

Distribution: Jeodong-ri (Wadalri), Namyang-ri (Tonggumi), Taeha-ri (Taeharyeong Pass).

***Cyclosa japonica* Bösenberg and Strand, 1906 (#)**

Cyclosa japonica: Namkung et al., 1981; Paik and Kang, 1988.

Distribution: Dodong-ri (Bongnaepokpo Falls), Cheonbu-ri (Jukam), Namyang-ri, Taeha-ri.

Specimens collected: 1 ♀ (Bongnaepokpo Falls, Dodong-ri, 2 Aug 2019), 1 ♀ (Namyang-ri, 1 Aug 2019), 2 ♀♀ (Taeha-ri, 1 Aug 2019).

***Cyclosa kumadai* Tanikawa, 1992 (O, #)**

Distribution: Saong-ri (Anpyeongjeon), Taeha-ri (Taeha-ri, Seodalryeong Pass).

Specimens collected: 1 ♀ (Anpyeongjeon, Sadong-ri, 2 Sep 2019), 2 ♀♀ (Taeha-ri, 1 Aug 2019), 2 ♀♀ (Taeha-ri, 3 Sep 2019), 1 ♀ (Seodalryeong Pass, Taeha-ri, 3 Sep 2019).

***Cyclosa octotuberculata* Karsch, 1879 (#)**

Cyclosa octotuberculata: Kwon, 1977; Namkung et al., 1981; Paik and Kang, 1988.

Distribution: Cheonbu-ri (Baegun-dong), Dodong-ri (Bongnaepokpo Falls), Jeodong-ri (Jusagok, Sutgol, Wadalri, Yongbawigol), Namyang-ri (Namyang-ri, Tonggumi), Sadong-ri, Taeha-ri (Seodalryeong Pass).

Specimens collected: 3 ♀♀ (Jeodong-ri, 3 Sep 2019), 1 ♀j (Namyang-ri, 1 Aug 2019), 2 ♀♀ (Sadong-ri, 20 Jun 2019), 1 ♀j (Tonggumi, Namyang-ri, 23 May 2019), 1 ♀j (Taeha-ri, 21 May 2019), 1 ♀ (Taeha-ri, 1 Aug 2019), 1 ♀ (Taeha-ri, 3 Sep 2019), 3 ♀♀ (Seodalryeong Pass, Taeha-ri, 3 Sep 2019).

***Cyclosa omonaga* Tanikawa, 1992**

Cyclosa omonaga: Kim et al., 2018.

***Cyclosa vallata* (Keyserling, 1886) (#)**

Cyclosa vallata: Namkung et al., 1981; Paik and Kang, 1988.

Distribution: Taeha-ri.

Specimens collected: 1 ♀ 3 ♂♂ (Taeha-ri, 3 Sep 2019).

***Gasteracantha kuhli* C. L. Koch, 1837 (#)**

Gasteracantha leucomelaena: Paik, 1954; Paik and Kim, 1956.

Gasteracantha kuhli: Namkung et al., 1981; Paik and Kang, 1988; Kim et al., 2018.

Distribution: Cheonbu-ri (Jukam), Jeodong-ri (Yongbawigol), Namyang-ri (Namyang-ri, Guam), Sadong-ri (Anpyeongjeon), Taeha-ri (Taeha-ri, Seodalryeong Pass).

Specimens collected: 1 ♀ (Namyang-ri, 18 Jun 2019), 1 ♀ (Namyang-ri, 1 Aug 2019), 5 ♀♀ (Anpyeongjeon, Sadong-ri, 2 Sep

2019), 1♀ (Taeha-ri, 1 Aug 2019), 2♀♀ (Taeha-ri, 3 Sep 2019), 5♀♀ (Seodalryeong Pass, Taeha-ri, 3 Sep 2019).

***Gibbaranea abscissa* (Karsch, 1879) (#)**

Araneus abscissus: Paik and Kang, 1988.

Distribution: Jeodong-ri, Taeha-ri (Seodalryeong Pass).

Specimens collected: 1♀ (Seodalryeong Pass, Taeha-ri, 3 Sep 2019).

***Hypsosinga sanguinea* (C. L. Koch, 1844)**

Hypsosinga sanguinea: Paik and Kang, 1988.

Distribution: Dodong-ri.

***Lariniaria argiopiformis* (Bösenberg and Strand, 1906)**

Lariniaria argiopiformis: Namkung et al., 1981; Paik and Kang, 1988.

Distribution: Dodong-ri.

***Larinioides cornutus* (Clerck, 1757) (#)**

Nuctenea cornuta: Paik and Kang, 1988.

Distribution: Jeodong-ri (Jeodong-ri, Yongbawigol), Seonginbong Peak.

Specimens collected: 2♀♀ (Jeodong-ri, 1 Aug 2019).

***Mangora herbeoides* (Bösenberg and Strand, 1906)**

Mangora herbeoides: Namkung et al., 1981; Paik and Kang, 1988.

***Neoscona adianta* (Walckenaer, 1802) (#)**

Neoscona adianta: Paik and Kang, 1988; Kim et al., 2018.

Distribution: Dodong-ri (Bongnaepokpo Falls), Na-ri (Na-ri, Albong Peak).

Specimens collected: 1♀ (Bongnaepokpo Falls, Dodong-ri, 2 Aug 2019), 1♀ 2♂♂ (Na-ri, 31 Jul 2019).

***Neoscona nautica* (L. Koch, 1875) (#)**

Araneus nauticus: Paik, 1954; Paik and Kim, 1956; Namkung et al., 1981; Paik and Kang, 1988.

Neoscona nautica: Kim et al., 2018.

Distribution: Dodong-ri (Bongnaepokpo Falls), Namyang-ri, Taeha-ri.

Specimens collected: 1♀ (Bongnaepokpo Falls, Dodong-ri, 2 Aug 2019), 4♀♀ (Namyang-ri, 1 Aug 2019), 3♀♀ (Taeha-ri, 3 Sep 2019).

***Neoscona pseudonautica* Yin Wang, Xie and Peng, 1990 (O, #)**

Distribution: Jeodong-ri (Naesujeon).

Specimens collected: 2♀♀ 1♂ (Naesujeon, Jeodong-ri, 1 Sep 2019).

***Neoscona scylla* (Karsch, 1879) (#)**

Araneus scyllus: Paik, 1954.

Neoscona scylla: Paik and Kim, 1956; Namkung et al., 1981; Paik and Kang, 1988; Kim et al., 2018.

Distribution: Dodong-ri (Bongnaepokpo Falls), Jeodong-ri (Naesujeon, Wadalri, Yongbawigol), Namyang-ri (Namyang-ri, Tonggumi), Sadong-ri (Anpyeongjeon), Taeha-ri (Seodalryeong Pass).

Specimens collected: 1♀ (Bongnaepokpo Falls, Dodong-ri, 2 Aug 2019), 4♀♀ 6♂♂ (Naesujeon, Jeodong-ri, 1 Sep 2019), 1♀ (Namyang-ri, 1 Aug 2019), 1♂ (Anpyeongjeon, Sadong-ri, 2 Sep 2019), 3♀♀ 3♂♂ (Seodalryeong Pass, Taeha-ri, 2 Sep 2019).

***Neoscona scylloides* (Bösenberg and Strand, 1906) (#)**

Neoscona scylloides: Namkung et al., 1981; Paik and Kang, 1988.

Distribution: Dodong-ri (Bongnaepokpo Falls), Jeodong-ri (Jeodong-ri, Naesujeon), Namyang-ri, Namyang-ri (Namyang-ri, Tonggumi), Taeha-ri (Taeha-ri, Seodalryeong Pass).

Specimens collected: 3♀♀ (Jeodong-ri, 18 Jun 2019), 1♀j (Tonggumi, Namyang-ri, 23 May 2019), 1♀ (Namyang-ri, 20 Jun 2019), 1♀j (Taeha-ri, 21 May 2019), 1♀ (Taeha-ri, 20 Jun 2019), 3♀♀ (Taeha-ri, 1 Aug 2019), 2♀♀ (Seodalryeong Pass, Taeha-ri, 3 Sep 2019).

***Neoscona subpullata* (Bösenberg and Strand, 1906)**

Neoscona subpullata: Namkung et al., 1981; Paik and Kang, 1988.

***Neoscona theisi* (Walckenaer, 1842)**

Neoscona theisi: Namkung et al., 1981; Paik and Kang, 1988.

Distribution: Dodong-ri (Bongnaepokpo Falls).

***Plebs sachalinensis* (Saito, 1934) (#)**

Zilla sachalinensis: Namkung et al., 1981; Paik and Kang, 1988.

Distribution: Dodong-ri (Bongnaepokpo Falls, Saguneom), Gwanmobong Peak, Jeodong-ri (Jeodong-ri, Jusagok, Yongbawigol),

Na-ri.

Specimens collected: 2♀♀ (Jeodong-ri, 18 Jun 2019), 1♀ (Na-ri, 22 May 2019).

***Pronoides brunneus* Schenkel, 1936**

Pronous minutus: Namkung et al., 1981; Paik and Kang, 1988.

Distribution: Seonginbong Peak.

***Trichonephila clavata* (L. Koch, 1878) (#)**

Nephila clavate (lapsus): Paik, 1954.

Nephila clavata: Paik and Kim, 1956; Kwon, 1977; Namkung et al., 1981; Paik and Kang, 1988.

Distribution: Dodong-ri (Bongnaepokpo Falls), Jeodon-ri (Jeodong-ri, Yonbawigol), Namyang-ri, Sadong-ri (Sadong-ri, Anpyeongjeon), Taeha-ri (Taeha-ri, Seodalryeong Pass).

Specimens collected: 3♀♀ (Bongnaepokpo Falls, Dodong-ri, 2 Aug 2019), 12♀♀ 5♂♂ (Jeodong-ri, 3 Sep 2019), 7♀♀ (Namyang-ri, 1 Aug 2019), 2♀♀ (Sadong-ri, 1 Aug 2019), 36♀♀ 5♂♂ (Anpyeongjeon, Sadong-ri, 2 Sep 2019), 23♀♀ (Taeha-ri, 3 Sep 2019), 1♀ (Seodalryeong Pass, Taeha-ri, 1 Aug 2019).

***Yaginumia sia* (Strand, 1906) (O, #)**

Distribution: Jeodong-ri.

Specimens collected: 8♀♀ 2♂♂ (Jeodong-ri, 21 May 2019).

Family LYCOSIDAE Sundevall, 1833

***Alopecosa cinnameopilosa* (Schenkel, 1963)**

Alopecosa cinnameopilosa: Paik, 1988, 1995c.

***Pardosa astrigera* L. Koch, 1878 (#)**

Lycosa astrigera: Paik, 1954; Paik and Kim, 1956; Namkung et al., 1981.

Pardosa T-insignita: Namkung et al., 1981.

Pardosa astrigera: Paik and Kang, 1988; Kim et al., 2018.

Distribution: Cheonbu-ri (Jukam), Dodong-ri (Dodong-ri, Bongnaepokpo Falls), Jeodong-ri (Naesujeon), Na-ri, Namyang-ri (Tonggumi), Sadong-ri (Anpyeongjeon), Taeha-ri (Seodalryeong Pass).

Specimens collected: 1♀ (Bongnaepokpo Falls, Dodong-ri, 2 Aug 2019), 2♀♀ (Naesujeon, Jeodong-ri, 22 May 2019), 7♀♀ (Tonggumi, Namyang-ri, 23 May 2019), 30♀♀ (Na-ri, 22 May 2019), 5♀♀ 1♂ (Na-ri, 18 Jun 2019), 3♀♀ (Seodalryeong Pass, Taeha-ri, 3 Sep 2019).

***Pirata piraticus* (Clerck, 1757)**

Pirata piraticus: Kwon, 1977; Namkung et al., 1981; Paik and Kang, 1988.

Distribution: Seonginbong Peak.

***Piratula clercki* (Bösenberg and Strand, 1906)**

Pirata clercki: Namkung, 1985; Paik and Kang, 1988.

Distribution: Dodong-ri (Saguneom), Taeha-ri.

***Piratula knorri* (Scopoli, 1763)**

Pirata knorrii: Paik, 1954; Paik and Kim, 1956; Sohn and Paik, 1981; Namkung et al., 1981; Paik and Kang, 1988.

***Piratula piratoides* (Bösenberg and Strand, 1906)**

Pirata piratoides: Namkung et al., 1981; Paik and Kang, 1988.

Distribution: Taeha-ri.

***Piratula procurva* (Bösenberg and Strand, 1906) (#)**

Pirata procurvus: Namkung et al., 1981; Paik and Kang, 1988.

Piratula procurva: Kim et al., 2018.

Distribution: Dodong-ri (Bongnaepokpo Falls, Saguneom), Gwanmobong Peak, Jeodong-ri (Jeodong-ri, Naesujeon), Sadong-ri (Anpyeongjeon).

Specimens collected: 1♀ 1♂ (Jeodong-ri, 1 Aug 2019), 3♂♂ (Naesujeon, Jeodong-ri, 1 Sep 2019), 4♂♂ (Sadong-ri, 1 Aug 2019), 3♀♀ (Anpyeongjeon, Sadong-ri, 2 Sep 2019).

***Piratula yaginumai* (Tanaka, 1974)**

Pirata yaginumai: Paik and Kang, 1988.

Piratula yaginumai: Kim et al., 2018.

Distribution: Cheonbu-ri (Hongmundong), Dodong-ri (Bongnaepokpo Falls, Saguneom), Jeodong-ri (Naesujeon), Na-ri (Albong Peak, Chusandong), Namyang-ri (Tonggumi), Sadong-ri, Seonginbong Peak, Taeha-ri.

***Trochosa ruricola* (De Geer, 1778) (#)**

Trochosa ruricola: Namkung et al., 1981; Paik and Kang, 1988.

Distribution: Taeha-ri.

Specimens collected: 1 ♀ 1 ♂ (Taeha-ri, 1 Aug 2019).

Family PISAURIDAE Simon, 1890***Dolomedes raptor* Bösenberg and Strand, 1906**

Dolomedes raptor: Namkung et al., 1981; Paik and Kang, 1988.

Distribution: Dodong-ri.

***Dolomedes sulfureus* L. Koch, 1878 (#)**

Dolomedes sulfureus: Namkung et al., 1981; Paik and Kang, 1988.

Distribution: Jeodong-ri (Yongbawigol), Na-ri (Na-ri, Albong Peak), Taeha-ri (Taeharyeong Pass).

Specimens collected: 3 ♀ ♀ (Na-ri, 18 Jun 2019).

***Pisaura ancora* Paik, 1969**

Pisaura ancora: Paik, 1969, 1978b; Kwon, 1977; Namkung et al., 1981; Paik and Kang, 1988.

Distribution: Dodong-ri, Gwanmobong Peak, Jeodong-ri (Wadalri), Namyang-ri (Tonggumi).

***Pisaura lama* Bösenberg and Strand, 1906 (#)**

Pisaura lama: Namkung et al., 1981; Paik and Kang, 1988.

Distribution: Dodong-ri (Dodong-ri, Bongnaepokpo Falls), Jeodong-ri (Naesujeon), Na-ri, Namyang-ri, Taeha-ri (Taeha-ri, Seodalryeong Pass).

Specimens collected: 1 ♀ (Bongnaepokpo Falls, 2 Aug 2019), 1 ♀ (Naesujeon, Jeodong-ri, 22 May 2019), 1 ♀ (Naesujeon, Jeodong-ri, 1 Sep 2019), 1 ♀ 1 ♂ (Na-ri, 22 May 2019), 1 ♀ (Namyang-ri, 1 Aug 2019), 1 ♀ (Taeha-ri, 1 Aug 2019), 1 ♀ (Taeha-ri, 3 Sep 2019), 6 ♀ ♀ (Seodalryeong Pass, Taeha-ri, 1 Aug 2019), 3 ♀ ♀ (Seodalryeong Pass, Taeha-ri, 2 Sep 2019).

Family CTENIDAE Keyserling, 1877***Anahita fauna* Karsch, 1879 (#)**

Anahita fauna: Paik, 1978b; Namkung et al., 1981; Paik and Kang, 1988; Kim et al., 2018.

Distribution: Dodong-ri (Bongnaepokpo Falls, Saguneom), Gwanmobong Peak, Jeodong-ri (Jeodong-ri, Naesujeon, Wadal-ri, Yongbawigol), Namseo-ri, Na-ri, Namyang-ri (Albong Peak, Chusandong, Mt. Chusan), Sadong-ri (Anpyeongjeon), Taeha-ri (Seodalryeong Pass).

Specimens collected: 1 ♀ (Jeodong-ri, 18 Jun 2019), 1 ♀ (Jeodong-ri, 1 Jun 2019), 1 ♂ (Naesujeon, Jeodong-ri, 18 Jun 2019), 6 ♀ ♀ (Namseo-ri, 1 Aug 2019), 1 ♀ (Namyang-ri, 1 Aug 2019), 7 ♀ ♀ (Anpyeongjeon, Sadong-ri, 2 Sep 2019), 1 ♀ 2 ♂ ♂ (Taeha-ri, 20 Jun 2019), 5 ♀ ♀ (Seodalryeong Pass, Taeha-ri, 3 Sep 2019).

Family AGELENIDAE C. L. Koch, 1837***Agelena labyrinthica* (Clerck, 1757)**

Agelena labyrinthica: Namkung et al., 1981; Paik and Kang, 1988.

***Agelena limbata* Thorell, 1897 (#)**

Agelena limbata: Paik, 1954, 1965b, 1978b; Paik and Kim, 1956; Namkung et al., 1981; Paik and Kang, 1988; Kim et al., 2018.

Distribution: Cheonbu-ri (Hongmundong), Dodong-ri (Dodong-ri, Bongnaepokpo Falls), Jeodong-ri (Jeodong-ri, Naesujeon, Yongbawigol), Namyang-ri Namyang-ri (Tonggumi), Sadong-ri.

Specimens collected: 1 ♀ (Bongnaepokpo Falls, Dodong-ri, 2 Aug 2019), 2 ♀ ♀ 1 ♂ (Jeodong-ri, 31 Jul 2019), 8 ♀ ♀ 2 ♂ ♂ (Jeodong-ri, 1 Aug 2019), 2 ♀ ♀ (Namyang-ri, 1 Aug 2019), 2 ♀ ♀ (Sadong-ri, 1 Aug 2019).

***Allagelena difficilis* (Fox, 1936) (#)**

Allagelena difficilis: Paik, 1978b; Namkung et al., 1981; Paik and Kang, 1988.

Distribution: Dodong-ri (Bongnaepokpo Falls), Taeha-ri (Taeha-ri, Seodalryeong Pass).

Specimens collected: 1 ♂ (Bongnaepokpo Falls, Dodong-ri, 2 Aug 2019), 9 ♀ ♀ 1 ♂ (Taeha-ri, 3 Sep 2019), 7 ♀ ♀ (Seodalryeong Pass, Taeha-ri, 3 Sep 2019).

***Allagelena koreana* (Paik, 1965)**

Allagelena koreana: Kim et al., 2018.

***Allagelena opulenta* (L. Koch, 1878)**

Agelena opulenta: Paik, 1954, 1965b, 1978b; Namkung et al., 1981; Paik and Kang, 1988.

Distribution: Dodong-ri, Jeodong-ri (Jusagok).

***Iwogumoa songminjae* (Paik and Yaginuma, 1969) (#)**

Coelotes songminjae: Paik, 1971c, 1978b; Namkung et al., 1981; Paik and Kang, 1988.

Iwogumoa songminjae: Kim et al., 2018.

Distribution: Cheonbu-ri (Jukam), Dodong-ri (Bongnaepokpo Falls, Saguneom), Gwanmobong Peak, Jeodong-ri (Jeodong-ri, Wadalri, Yongbaqigol), Namyang-ri (Tonggumi), Seonginbong Peak.

Specimens collected: 3♀♀ (Jeodong-ri, 18 Jun 2019), 2♀♀ 1♂ (Jeodong-ri, 1 Aug 2019).

***Pireneitega luctuosa* (L. Koch, 1878)**

Coras luctuosus: Paik, 1971a, 1978b; Kwon, 1977; Namkung et al., 1981.

Paracoelotes luctuosus: Paik and Kang, 1988.

Distribution: Dodong-ri, Gwanmobong Peak, Jeodong-ri, Namyang-ri, Seonginbong Peak.

***Tegenaria domestica* (Clerck, 1757)**

Tegenaria domestica: Paik, 1971b, 1978b; Namkung et al., 1981; Paik and Kang, 1988.

Distribution: Dodong-ri, Jeodong-ri (Wadalri, Yonggul), Namyang-ri.

Family DICTYNIDAE O. P.-Cambridge, 1871

***Dictyna arundinacea* (Linnaeus, 1758)**

Dictyna arundinacea: Paik and Kang, 1988.

Distribution: Dodong-ri (Bongnaepokpo Falls), Jeodong-ri (Wadalri).

***Dictyna foliicola* Bösenberg and Strand, 1906 (#)**

Dictyna foliicola: Paik, 1979; Namkung et al., 1981; Paik and Kang, 1988.

Distribution: Namyang-ri, Sadong-ri, Taeha-ri (Taeha-ri, Seodalryeong Pass).

Specimens collected: 1♂ (Namyang-ri, 20 Jun 2019), 1♀ (Sadong-ri, 1 Aug 2019), 3♀♀ (Taeha-ri, 21 May 2019), 1♀ (Seodalryeong Pass, Taeha-ri, 1 Aug 2019).

***Lathys dihamata* Paik, 1979**

Lathys dihamata: Namkung et al., 1981.

***Paratheuma shirahamaensis* (Oi, 1960)**

Litisedes shirahamensis: Paik and Kang, 1987; Paik and Kang, 1988.

Distribution: Jeodong-ri (Naesujeon).

***Sudesna hedini* (Schenkel, 1936)**

Dictyna hedini: Paik and Kang, 1988.

Distribution: Jeodong-ri (Naesujeon).

Family TITANOECIDAE Lehtinen, 1967

***Nurscia albofasciata* (Strand, 1907)**

Titanoeca nipponica: Paik, 1966; Namkung et al., 1981.

Titanoeca albofasciata: Paik and Kang, 1988.

Distribution: Sadong-ri, Namyang-ri (Tonggumi).

Family CHEIRACANTHIDAE Wagner, 1887

***Cheiracanthium japonicum* Bösenberg and Strand, 1906**

Chiracanthium japonicum: Namkung et al., 1981; Paik and Kang, 1988.

Cheiracanthium japonicum: Kim et al., 2018.

***Cheiracanthium zhejiangense* Hu and Song, 1982**

Cheiracanthium zhejiangense: Paik, 1995c.

Distribution: Geumryonggi, Gwanmobong Peak.

Family MITURGIDAE Simon, 1886

***Prochora praticola* (Bösenberg and Strand, 1906) (#)**

Itatsina praticola: Namkung et al., 1981; Paik and Kang, 1988.

Prochora praticola: Kim et al., 2018.

Distribution: Dodong-ri (Bongnaepokpo Falls), Jeodong-ri (Jeodong-ri, Naesujeon, Yongbawigol), Namseo-ri, Namyang-ri (Tonggumi),

Sadong-ri, Taeha-ri (Taeha-ri, Seodalryeong Pass).

Specimens collected: 2♀♀ 3♂♂ (Jeodong-ri, 1 Aug 2019), 4♀♀ (Naesujeon, Jeodong-ri, 1 Sep 2019), 1♀ 4♂♂ (Namseo-ri, 1 Aug 2019), 1♀ (Tonggumi, Namyang-ri, 23 May 2019), 1♂ (Na-ri, 31 Jul 2019), 5♂♂ (Sadong-ri, 1 Aug 2019), 1♀ (Taeha-ri, 20 Jun 2019), 2♂♂ (Seodalryeong Pass, Taeha-ri, 20 Jun 2019).

Family PHRUROLITHIDAE Banks, 1892

Otacilia pennata (Yaginuma, 1967)

Phrurolithus pennatus: Kim et al., 2018.

Phrurolithus labialis Paik, 1991

Phrurolithus labialis: Paik, 1995c.

Distribution: Jeodong-ri (Wadalri), Geumyonggi.

Phrurolithus pennatooides Seo, 2018

Phrurolithus pennatooides Seo, 2018.

Distribution: Buk-myeon, Seo-Myeon.

Phrurolithus sinicus Zhu and Mei, 1982

Phrurolithus sinicus: Paik, 1995c.

Distribution: Jeodong-ri, Geumyonggi.

Family CLUBIONIDAE Wagner, 1887

Clubiona coreana Paik, 1990 (#)

Clubiona coreana: Kim et al., 2018.

Distribution: Dodong-ri, Jeodong-ri.

Specimens collected: 1♀ (Jeodong-ri, 18 Jun 2019).

Clubiona japonicola Bösenberg and Strand, 1906

Clubiona japonicola: Kim et al., 2018.

Clubiona jucunda (Karsch, 1879)

Clubiona jucunda: Paik, 1954; Paik and Kim, 1956; Namkung et al., 1981; Paik and Kang, 1988; Kim et al., 2018.

Clubiona kurilensis Bösenberg and Strand, 1906

Clubiona kurilensis: Kim et al., 2018.

Clubiona rostrata Paik, 1985 (#)

Clubiona rostrata: Paik and Kang, 1988.

Distribution: Na-ri, Namyang-ri, Taeha-ri.

Specimens collected: 1♀ (Na-ri, 31 Jul 2019).

Clubiona tongdaoensis Zhang, Yin, Bao and Kim, 1997

Clubiona tongdaoensis: Seo, 2017.

Distribution: Buk-myeon.

Clubiona vigil Karsch, 1879 (#)

Clubiona vigil: Namkung et al., 1981; Paik and Kang, 1988.

Distribution: Dodong-ri (Bongnaepokpo Falls), Jeodong-ri, Na-ri, Sadong-ri (Anpyeongjeon), Taeha-ri.

Specimens collected: 2♀♀ (Jeodong-ri, 1 Aug 2019), 2♀♀ (Na-ri, 18 Jun 2019), 1♀ (Anpyeongjeon, Sadong-ri, 2 Sep 2019), 4♀♀ (Taeha-ri, 1 Aug 2019).

Family TRACHELIDAE Simon, 1897

Orthobula crucifera Bösenberg and Strand, 1906 (#)

Orthobula crucifera: Namkung et al., 1981; Paik and Kang, 1988.

Distribution: Dodong-ri (Dodong-ri, Bongnaepokpo Falls), Jeodong-ri (Jeodong-ri, Naesujeon, Wadalri), Namyang-ri (Guam), Sadong-ri, Taeha-ri.

Specimens collected: 2♀♀ (Jeodong-ri, 1 Aug 2019), 4♀♀ 1♂ (Naesujeon, Jeodong-ri, 18 Jun 2019), 3♂♂ (Naesujeon, Jeodong-ri, 1 Sep 2019), 2♀♀ 2♂♂ (Sadong-ri, 1 Aug 2019), 2♀♀ (Taeha-ri, 3 Sep 2019).

Trachelas japonicus Bösenberg and Strand, 1906 (O, #)

Distribution: Na-ri.

Specimens collected: 1♀ 2♂♂ (Na-ri, 31 Jul 2019).

Family TROCHANTERIIDAE Karsch, 1879

***Plator nipponicus* (Kishida, 1914)**

Plator nipponicus: Paik, 1978b; Namkung et al., 1981; Paik and Kang, 1988.

Distribution: Cheonbu-ri.

Family GNAPHOSIDAE Pocock, 1898

***Cladothela parva* Kamura, 1991**

Cladothela parva: Seo, 2008.

Distribution: Taeha-ri.

***Cladothela unciinsignita* (Bösenberg and Strand, 1906)**

Cladothela unciinsignita: Seo, 2008.

Distribution: Jeodong-ri.

***Drassodes serratidens* Schenkel, 1963 (#)**

Drassodes pseudopubescens: Namkung et al., 1981.

Drassodes serratidens: Paik and Kang, 1988.

Distribution: Dodong-ri (Dodong-ri, Bongnaepokpo Falls), Jeodong-ri (Wadalri), Na-ri, Taeha-ri.

Specimens collected: 1♀ (Bongnaepokpo Falls, Dodong-ri, 2 Aug 2019), 2♀♀ (Na-ri, 22 May 2019).

***Drassodes taehadongensis* Paik, 1995**

Drassodes taehadongensis Paik, 1995c.

Distribution: Taeha-ri.

***Gnaphosa kansuensis* Schenkel, 1936**

Gnaphosa kansuensis: Paik, 1995c.

Distribution: Dodong-ri.

***Gnaphosa kompirensis* Bösenberg and Strand, 1906**

Gnaphosa kompirensis: Namkung et al., 1981; Paik and Kang, 1988; Kim et al., 2018.

***Haplodrassus kulezyskii* Lohmander, 1942**

Haplodrassus magnipalpus: Paik and Sohn, 1984.

Distribution: Jeodong-ri.

***Marinarozelotes jaxartensis* (Kroneberg, 1875) (#)**

Trachyzelotes jaxartensis: Paik and Kang, 1988.

Distribution: Jeodong-ri, Namyang-ri (Guam), Taeha-ri (Seodalryeong Pass).

Specimens collected: 1♂ (Seodalryeong Pass, Taeha-ri, 3 Sep 2019).

***Urozelotes rusticus* (L. Koch, 1872)**

Urozelotes rusticus: Paik, 1986c; Paik and Kang, 1988.

Distribution: Dodong-ri, Jeodong-ri.

***Zelotes davidi* Schenkel, 1963**

Zelotes davidi: Paik and Kang, 1988.

Distribution: Dodong-ri.

***Zelotes wuchangensis* Schenkel, 1963**

Zelotes wuchangensis: Paik, 1986c; Paik and Kang, 1988.

Distribution: Jeodong-ri.

Family SPARASSIDAE Bertkau, 1872

***Micrommata virescens* (Clerck, 1757) (#)**

Micrommata roseum: Paik and Kang, 1988.

Distribution: Na-ri.

Specimens collected: 3♀♀j (Na-ri, 18 Jun 2019).

Family PHILODROMIDAE Thorell, 1870

***Philodromus aureolus* (Clerck, 1757) (O, #)**

Distribution: Dodong-ri (Bongnaepokpo Falls), Namyang-ri.

Specimens collected: 1♀ (Bongnaepokpo Falls, Dodong-ri, 18 Jun 2019), 2♀♀ 1♂ (Namyang-ri, 20 Jun 2019).

***Philodromus auricomus* L. Koch, 1878**

Philodromus auricomus: Paik and Kang, 1988.

Distribution: Jeodong-ri (Wadalri).

***Philodromus cespitum* (Walckenaer, 1802)**

Philodromus cespitum: Paik, 1979b; Namkung et al., 1981; Paik and Kang, 1988.

Distribution: Jeodong-ri (Wadalri).

***Philodromus pseudoexilis* Paik, 1979**

Philodromus pseudoexilis Paik, 1979b; Namkung et al., 1981; Paik and Kang, 1988.

Distribution: Jeodon-ri (Wadalri).

***Philodromus rufus* Walckenaer, 1826 (#)**

Philodromus rufus: Namkung, 1985; Paik and Kang, 1988.

Distribution: Dodong-ri (Bongnaepokpo Falls), Na-ri, Namyang-ri (Tonggumi), Sadong-ri, Taeha-ri.

Specimens collected: 2♀ (Na-ri, 22 May 2019), 1♀ (Tonggumi, Namyang-ri, 23 May 2019), 2♀ (Sadong-ri, 20 Jun 2019), 1♀ (Taeha-ri, 21 May 2019).

***Philodromus spinatarsis* Simon, 1895 (#)**

Philodromus fuscomarginatus: Paik and Kim, 1956; Paik, 1979b; Namkung et al., 1981; Paik and Kang, 1988.

Distribution: Dodong-ri, Jeodong-ri, Namyang-ri (Tonggumi), Na-ri.

Specimens collected: 2♀ (Jeodong-ri, 31 Jul 2019).

***Philodromus subaureolus* Bösenberg and Strand, 1906 (#)**

Philodromus subaureolus: Paik, 1979b; Namkung et al., 1981; Paik and Kang, 1988; Kim et al., 2018.

Distribution: Dodong-ri (Bongnaepokpo Falls), Jeodong-ri (Jeodong-ri, Naesujeon, Wadalri), Sadong-ri, Taeha-ri (Taeha-ri, Seodalryeong Pass).

Specimens collected: 1♀ (Jeodong-ri, 18 Jun 2019), 1♀ (Naesujeon, Jeodong-ri, 18 Jun 2019), 1♂ (Sadong-ri, 20 Jun 2019), 4♀ (Taeha-ri, 1 Aug 2019), 1♀ (Seodalryeong Pass, Taeha-ri, 1 Aug 2019).

***Thanatus coreanus* Paik, 1979**

Thanatus coreanus: Namkung et al., 1981; Paik and Kang, 1988.

***Thanatus miniaceus* Simon, 1880**

Thanatus miniaceus: Paik, 1995c.

Distribution: Na-ri (Albong Peak).

***Thanatus nipponicus* Yaginuma, 1969**

Thanatus nipponicus: Paik and Kang, 1988.

Distribution: Jeodong-ri (Julmaendeung).

Family THOMISIDAE Sundevall, 1833***Diaea subdola* O. P.-Cambridge, 1885 (#)**

Misumenops japonicus: Kwon, 1977; Namkung et al., 1981; Paik and Kang, 1988.

Diaea subdola: Kim et al., 2018.

Distribution: Dodong-ri (Dodong-ri, Bongnaepokpo Falls), Jeodong-ri (Jeodong-ri, Naesujeon, Wadalri, Yongbawigol), Na-ri, Namyang-ri, Taeha-ri (Seodalryeong Pass).

Specimens collected: 1♀ (Bongnaepokpo Falls, Dodong-ri, 2 Aug 2019), 3♀ 3♂ (Jeodong-ri, 2 Aug 2019), 1♀ (Naesujeon, Jeodong-ri, 18 Jun 2019), 1♀ 1♂ (Namyang-ri, 20 Jun 2019), 1♀ 1♂ (Na-ri, 18 Jun 2019), 1♀ (Seodalryeong Pass, Taeha-ri, 1 Aug 2019).

***Ebrechtella tricuspadata* (Fabricius, 1775) (#)**

Misumenops tricuspadata: Paik, 1954; Paik and Kim, 1956.

Misumenops tricuspadata: Namkung et al., 1981; Paik and Kang, 1988.

Distribution: Cheonbu-ri (Jukam), Dodong-ri (Dodong-ri, Bongnaepokpo Falls), Jeodong-ri (Naesujeon, Naesujeon Mongdol Beach, Wadalri, Yongbawigol), Na-ri, Namyang-ri (Chusandong), Sadong-ri, Taeha-ri.

Specimens collected: 2♀ (Bongnaepokpo Falls, Dodong-ri, 2 Aug 2019), 1♂ (Naesujeon, Jeodong-ri, 22 May 2019), 1♀ 2♂ (Naesujeon Mongdol Beach, Jeodong-ri, 21 Jun 2019), 2♀ 1♂ (Namyang-ri, 20 Jun 2019), 2♀ (Namyang-ri, 1 Aug 2019), 1♀ (Sadong-ri, 20 Jun 2019), 8♀ 3♂ (Taeha-ri, 21 May 2019), 1♀ 2♂ (Taeha-ri, 20 Jun 2019), 3♀ 3♂ (Taeha-ri, 1 Aug 2019).

***Ozyptila nongae* Paik, 1974 (#)**

Oxyptila nongae: Paik and Kang, 1988.

Distribution: Dodong-ri (Bongnaepokpo Falls), Jeodong-ri (Jeodong-ri, Naesujeon, Wadalri), Sadong-ri.

Specimens collected: 3♀♀ (Jeodong-ri, 1 Aug 2019), 2♀♀ (Sadong-ri, 1 Aug 2019).

***Tmarus koreanus* Paik, 1973 (#)**

Tmarus koreanus Paik, 1973; Namkung et al., 1981; Paik and Kang, 1988.

Distribution: Dodong-ri (Saguneom), Jeodong-ri, Sadong-ri (Obatgol).

Specimens collected: 1♀ (Jeodong-ri, 18 Jun 2019).

***Tmarus orientalis* Schenkel, 1963 (O, #)**

Distribution: Namyang-ri (Tonggumi), Na-ri.

Specimens collected: 1♂ (Tonggumi, Namyang-ri, 23 May 2019), 1♂ (Na-ri, 22 May 2019).

***Tmarus rimosus* Paik, 1973**

Tmarus rimosus: Namkung et al., 1981; Paik and Kang, 1988.

***Xysticus concretus* Utochkin, 1968**

Xysticus dichotomus: Namkung et al., 1981; Paik and Kang, 1988.

Distribution: Dodong-ri, Jeodong-ri.

***Xysticus croceus* Fox, 1937**

Xysticus ephippiatus: Paik, 1954, 1975; Paik and Kim, 1956; Namkung et al., 1981.

Xysticus croceus: Paik and Kang, 1988; Kim et al., 2018.

Distribution: Gwanmobong Peak.

***Xysticus ephippiatus* Simon, 1880 (#)**

Xysticus ephippiatus: Paik, 1975; Namkung et al., 1981; Paik and Kang, 1988; Kim et al., 2018.

Distribution: Dodong-ri, Gwanmobong Peak, Dodong-ri (Bongnaepokpo Falls), Jeodong-ri (Jeodong-ri, Naesujeon, Wadalri, Yongbawigol), Namyang-ri (Namyang-ri, Tonggumi), Na-ri (Chusandong), Sadong-ri (Anpyeongjeon), Taeha-ri.

Specimens collected: 1♀ 1♂ (Jeodong-ri, 18 Jun 2019), 2♂♂ (Naesujeon, Jeodong-ri, 18 Jun 2019), 3♀♀ (Namyang-ri, 1 Aug 2019), 1♀ 1♂ (Taeha-ri, 20 Jun 2019).

***Xysticus insulicola* Bösenberg and Strand, 1906**

Xysticus bifurcus: Namkung et al., 1981; Paik and Kang, 1988.

***Xysticus saganus* Bösenberg and Strand, 1906**

Xysticus saganus: Kwon, 1977; Namkung et al., 1981; Paik and Kang, 1988.

Distribution: Dodong-ri.

Family SALTICIDAE Blackwall, 1841

***Carrhotus xanthogramma* (Latreille, 1819) (O, #)**

Distribution: Jeodong-ri (Naesujeon), Taeha-ri (Taeha-ri, Seodalreyeong Pass).

Specimens collected: 1♀ (Naesujeon, Jeodong-ri, 22 May 2019), 1♀ (Taeha-ri, 21 May 2019), 3♀♀ (Seodalreyeong Pass, Taeha-ri, 1 Aug 2019), 2♀♀ (Taeha-ri, 3 Sep 2019).

***Euophrys kataokai* Ikeda, 1996 (#)**

Euophrys frontalis: Paik and Kang, 1988.

Distribution: Jeodong-ri (Naesujeon), Na-ri, Taeha-ri.

Specimens collected: 1♀ (Na-ri, 18 Jun 2019), 1♀ 1♂ (Taeha-ri, 21 May 2019).

***Evarcha albaria* (L. Koch, 1878) (#)**

Hyllus lamperti: Paik, 1954; Paik and Kim, 1956.

Evarcha albaria: Namkung et al., 1981; Paik and Kang, 1988.

Distribution: Jeodong-ri (Naesujeon), Na-ri (Chusandong), Sadong-ri (Anpyeongjeon), Taeha-ri.

Specimens collected: 4♀♀ 1♂ (Taeha-ri, 1 Aug 2019).

***Hakka himeshimensis* (Dönitz and Strand, 1906) (#)**

Icius himeshimensis: Namkung et al., 1981.

Menemerus himeshimensis: Paik and Kang, 1988.

Distribution: Namyang-ri (Tonggumi).

Specimens collected: 3♀♀ (Tonggumi, Namyang-ri, 20 Apr 2019).

***Helicius yaginumai* Bohdanowicz and Prószyński, 1987 (#)**

Helicius sp.: Paik, 1987.

Helicius yaginumai: Paik and Kang, 1988.

Distribution: Jeodong-ri (Naesujeon, Pokpogol), Taeha-ri.

Specimens collected: 2 ♀♀ (Naesujeon, Jeodong-ri, 22 May 2019).

***Heliophanus lineiventris* Simon, 1868**

Heliophanus lineiventris: Paik and Kang, 1988.

Distribution: Jeodong-ri (Yongbawigol).

***Heliophanus ussuricus* Kulczyn'ski, 1895 (#)**

Heliophanus ussuricus: Paik, 1995c.

Distribution: Jeodong-ri (Naesujeon Mongdol Beach, Wadalri), Namyang-ri, Taeha-ri (Taeha-ri, Seodalryeong Pass).

Specimens collected: 11 ♀♀ (Naesujeon Mongdol Beach, Jeodong-ri, 21 Jun 2019), 1 ♀ (Namyang-ri, 20 Jun 2019), 1 ♀ (Namyang-ri, 1 Aug 2019), 16 ♀♀ (Taeha-ri, 1 Aug 2019), 1 ♀ (Seodalryeong Pass, Taeha-ri, 1 Aug 2019).

***Laufeia aenea* Simon, 1889**

Laufeia aenea: Paik and Kang, 1988.

Distribution: Na-ri.

***Marpissa milleri* (Peckham and Peckham, 1894)**

Marpissa dybowskii: Paik and Kang, 1988.

Marpissa milleri: Kim et al., 2018.

Distribution: Na-ri.

***Marpissa pomatia* (Walckenaer, 1802)**

Marpissa pomatia: Paik and Kang, 1988.

Distribution: Jeodong-ri.

***Marpissa pulla* (Karsch, 1879) (#)**

Marpissa pulla: Namkung et al., 1981; Paik and Kang, 1988.

Distribution: Dodong-ri, Jeodong-ri (Julmaendeung, Wadalri), Na-ri, Namyang-ri (Tonggumi), Taeha-ri.

Specimens collected: 1 ♂ (Tonggumi, Namyang-ri, 23 May 2019).

***Mendoza elongata* (Karsch, 1879)**

Marpissa elongata: Namkung et al., 1981; Paik and Kang, 1988.

***Menemerus fulvus* (L. Koch, 1878) (#)**

Menemerus confusus: Namkung et al., 1981; Paik and Kang, 1988.

Distribution: Jeodong-ri, Namyang-ri.

Specimens collected: 1 ♂ (Namyang-ri, 1 Aug 2019), 2 ♀♀ 2 ♂♂ (Jeodong-ri, 21 May 2019).

***Myrmarachne formicaria* (De Geer, 1778) (#)**

Myrmarachne formicaria: Namkung et al., 1981; Paik and Kang, 1988; Kim et al., 2018.

Distribution: Na-ri, Namyang-ri (Tonggumi), Sadong-ri, Taeha-ri (Taeha-ri, Seodalryeong Pass).

Specimens collected: 1 ♀ (Na-ri, 31 Jul 2019), 1 ♂ (Tonggumi, Namyang-ri, 23 May 2019), 1 ♀ (Sadong-ri, 1 Aug 2019), 1 ♀ 1 ♂ (Taeha-ri, 21 May 2019), 2 ♀♀ (Seodalryeong Pass, Taeha-ri, 1 Aug 2019), 2 ♀♀ (Seodalryeong Pass, Taeha-ri, 3 Sep 2019).

***Myrmarachne japonica* (Karsch, 1879) (#)**

Myrmarachne japonica: Namkung et al., 1981; Paik and Kang, 1988.

Distribution: Dodong-ri (Bongnaepokpo Falls), Jeodong-ri, Na-ri, Namyang-ri, Sadong-ri, Taeha-ri.

Specimens collected: 3 ♀♀ (Jeodong-ri, 18 Jun 2019), 1 ♂ (Na-ri, 18 Jun 2019), 3 ♀♀ 1 ♂ (Namyang-ri, 20 Jun 2019), 2 ♀♀ (Namyang-ri, 1 Aug 2019), 1 ♀ (Sadong-ri, 20 Jun 2019), 1 ♂ (Taeha-ri, 20 Jun 2019).

***Orienticius vulpes* (Grube, 1861)**

Pseudicus vlpes (lapsus): Paik, 1995c.

Distribution: Jeodong-ri (Wadalri).

***Phintella abnormis* (Bösenberg and Strand, 1906) (O, #)**

Distribution: Namyang-ri, Sadong-ri, Taeha-ri.

Specimens collected: 2 ♀♀ (Namyang-ri, 20 Jun 2019), 2 ♀♀ (Sadong-ri, 20 Jun 2019), 1 ♀ 1 ♂ (Taeha-ri, 21 May 2019), 1 ♀ (Taeha-ri, 20 Jun 2019).

***Phintella arenicolor* (Grube, 1861) (#)**

Icius difficilis: Namkung et al., 1981.

Phintella difficilis: Paik and Kang, 1988.

Phintella arenicolor: Kim et al., 2018.

Distribution: Dodong-ri (Bongnaepokpo Falls), Jeodong-ri (Jeodong-ri, Naesujeon), Namyang-ri, Taeha-ri.

Specimens collected: 1 ♀ 1 ♂ (Naesujeon, Jeodong-ri, 22 May 2019), 1 ♀ (Jeodong-ri, 18 Jun 2019), 1 ♂ (Namyang-ri, 20 Jun 2019), 1 ♀ (Taeha-ri, 1 Aug 2019).

***Phintella linea* (Karsch, 1879)**

Phintella linea: Namkung, 1985; Paik and Kang, 1988.

Distribution: Namseo-ri.

***Plexippus paykulli* (Audouin, 1826)**

Plexippus paykulli: Paik, 1954; Paik and Kim, 1956; Namkung et al., 1981; Paik and Kang, 1988.

***Plexippus setipes* Karsch, 1879 (#)**

Plexippus setipes: Namkung et al., 1981; Paik and Kang, 1988.

Distribution: Jeodong-ri (Julmaendeung), Taeha-ri.

Specimens collected: 1 ♂ (Taeha-ri, 3 Sep 2019).

***Pseudeuophrys iwatensis* Bohdanowicz and Prószyński, 1987**

Euophrys erratica: Paik, 1995c.

Distribution: Na-ri.

***Rhene atrata* (Karsch, 1881) (#)**

Dendryphantès atratus: Namkung et al., 1981.

Phene atrata (lapsus): Paik and Kang, 1988.

Distribution: Dodong-ri (Bongnaepokpo Falls), Jeodong-ri (Naesujeon), Na-ri.

Specimens collected: 1 ♀ (Bongnaepokpo Falls, Dodong-ri, 2 Aug 2019), 2 ♀ ♀ (Naesujeon, Jeodong-ri, 1 Sep 2019), 1 ♀ (Na-ri, 18 Jun 2019).

***Sibianor aurocinctus* (Ohlert, 1865)**

Bianor aurocinctus: Paik, 1995c.

Distribution: Jinsan.

***Sibianor pullus* (Bösenberg and Strand, 1906) (#)**

Bianor pullus: Namkung, 1985.

Harmochirus pullus: Paik and Kang, 1988.

Distribution: Na-ri, Seonginbong Peak.

Specimens collected: 2 ♂ ♂ (Na-ri, 22 May 2019).

***Sitticus albolineatus* (Kulczynski, 1895)**

Sitticus albolineatus: Paik, 1995c.

Distribution: Dodong-ri (Jusagol), Jeodong-ri.

***Sitticus fasciger* (Simon, 1880)**

Sitticus fasciger: Paik, 1995c.

Distribution: Namyang-ri (Tonggumi).

***Talavera ikedai* Logunov and Kronstedt, 2003**

Euophrys trivittata: Paik, 1986b; Paik and Kang, 1988.

Distribution: Dodong-ri, Jeodong-ri (Naesujeon).

***Yaginumaella medvedevi* Prószyński, 1979**

Yaginumaella medvedevi: Namkung et al., 1981; Paik and Kang, 1988.

Distribution: Dodong-ri (Bongnaepokpo Falls).